



2017 Annual Report

Leading the Way to Cancer Cures

TABLE OF CONTENTS

PRESIDENT & CHAIRMAN'S MESSAGE	2
VOLUNTEERS	3
RESEARCH	6
PATIENT EDUCATION & SUPPORT	11
POLICY & ADVOCACY	15
FUNDRAISING CAMPAIGNS	19
PARTNERSHIPS	23
FINANCIALS	24
ACKNOWLEDGMENTS	41

President & Chairman's Message

Thanks to your support, 2017 was a tremendous year for The Leukemia & Lymphoma Society's lifesaving mission and the patients and families we serve. You help fund research to find the next breakthrough therapy, you provide information and support to patients, and you make sure patients have access to lifesaving treatments.

Extraordinary progress is bringing us closer to cures. You make that possible.

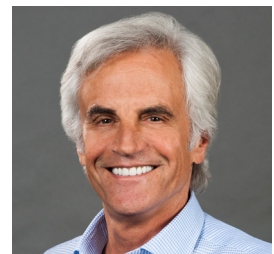
Gratefully,



Louis J. DeGennaro, Ph.D.
President & Chief Executive Officer




Peter Brock
Chairman of the Board



OUR MISSION

At LLS, our mission is to cure leukemia, lymphoma, Hodgkin's disease and myeloma, and improve the quality of life of patients and their families. Compared to any other blood cancer nonprofit, LLS is the largest funder of cutting-edge research to advance cures.



Dr. Gwen Nichols
Chief Medical Officer, LLS



Volunteers

OUR PARTNERS IN THE CRUSADE TO END CANCER

This year, LLS volunteers made a significant impact while selflessly dedicating their time and talent to achieve our mission. With countless ways to engage, from fundraising to providing patient support, our volunteers are changing the landscape of cancer.

Campaign Volunteers

With five signature fundraising campaigns, our volunteers can run, hike, walk, sail, build teams and gain lifelong learning skills while raising funds to drive forward our mission to end blood cancers.

MORE THAN

650,000

Team In Training teammates ran, hiked, cycled and climbed while raising funds since it began 30 years ago.

One million

friends, families and co-workers gather together carrying illuminated lanterns in 150 inspirational Light The Night evening events, helping bring light to the darkness of cancer.

MORE THAN

27,000

schools participate in Student Series, a set of science-based philanthropy programs run by volunteers helping to fight blood cancer.

900

candidates across the country competed to win the title of Man & Woman of the Year by raising funds in honor of local blood cancer survivors.

MORE THAN

400

motivated high school students across the country joined Students of the Year in its inaugural year.

MORE THAN

11,000

sailors, friends and sponsors set sail to raise money to cure cancer at Leukemia Cup Regatta events since it began 30 years ago.

Mission Volunteers

In communities across the country, volunteers provide support directly to blood cancer patients and caregivers, and advocate for legislation to improve access to care.

MORE THAN

100,000

volunteer advocates are effecting change by advocating for policy at the state and federal level.

NEARLY

8,000

volunteers across the nation provide direct support to patients and families in their communities.

Leadership Volunteers

We have the unwavering support of hundreds of top leaders across the country, helping us fulfill our mission to find cancer cures.

26

leaders serve on our National Board of Directors, providing leadership and governance to help find blood cancer cures.

MORE THAN

800

leaders serve on Boards of Trustees for our local chapters providing thought leadership and fundraising support.

16

of the best scientific and medical minds serve on our Medical Scientific Affairs Committee to review grant applications and select the most promising research for funding.

21

professional volunteer clinical advisors review materials to ensure the blood cancer information we share is accurate and up-to-date.

Community Volunteers

With 56 chapters across the country, there are many opportunities for volunteers to lend their time and talent in their own community, as well as in our national office.

Countless

volunteers helped prepare, staff and support our chapters and national office leading up to and on the day of events.

Numerous

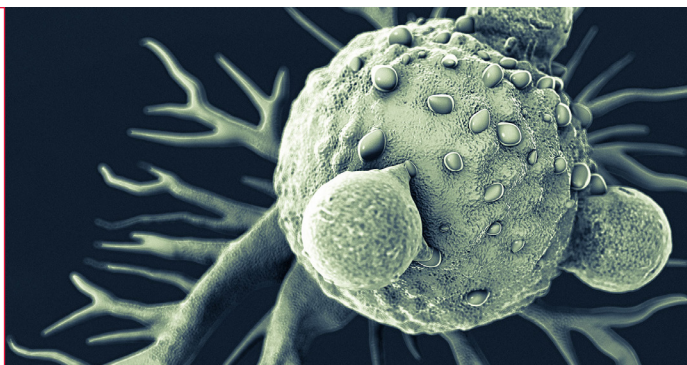
skill-based volunteers lend their talent with anything from administrative responsibilities, high-level projects to raising awareness.



Research

As there are no means of preventing blood cancers, the LLS research agenda is focused on finding treatments and cures. In fact, we have invested more than \$1.2 billion in research since our inception 68 years ago. For every victory in blood cancer, challenges remain. That is why LLS remains steadfast in our commitment to advance the most promising research around the world and drive forward innovative therapies that improve and save the lives of patients.

Advancing the Most Promising Science



Since 1949, LLS has supported the work of remarkable scientists leading to breakthrough advances in blood cancer treatments. To date, **LLS has invested more than \$1.2 billion in cutting-edge blood cancer research**, funding nearly all of today's most promising treatments, and bringing us closer to cures.

This year, LLS dedicated \$42 million to support scientific grants, including 83 new grants awarded in 2017 alone to researchers across 8 countries, making us the largest nonprofit funder of blood cancer research. Most of these grants are supporting research projects over multiple years. LLS supports the full spectrum of research from bench to bedside – that is, from basic, laboratory-based research to large-scale clinical trials. In 2017, we supported a total of 227 research grants, a \$211 million multi-year commitment.

Through our Therapy Acceleration Program® (TAP), we partner directly with biotechnology companies and renowned academic centers to help accelerate the

development of promising therapies. This year, \$4.7 million of our 2017 research budget was invested in our TAP program. TAP is currently supporting 19 partnerships.

Through these investments, we accelerate science in order to improve the lives of those impacted by blood cancers. While significant progress has been made, much work remains. There is an urgent need for new treatments and every hour spent conducting research is a step closer to finding cures.

VOLUNTEER SPOTLIGHT: SANDY ALLEN-BARD

Fighting blood cancer is a cause that has always been close to my heart. I lost my grandfather to acute myeloid leukemia in 1971. Today, I work as a nurse practitioner focused on leukemia at the Weill Cornell Medical College/New York Presbyterian Hospital.

Since 2003, I have volunteered for LLS in many ways. I first signed up for Team In Training (TNT) in support of the patients I treat. I am now a TNT coach and I've completed 30 marathons and three 50-mile races. My greatest accomplishment is raising more than \$260,000 over multiple campaigns, which funded research at Weill Cornell Medical College and research dedicated to AML.

I've also volunteered for LLS's patient outreach efforts. I started a patient support group at Weill Cornell Medical College, and I have given many lecture series. I was active in the LLS Community Service Committee programs, and I was team captain for Light The Night. I will continue to volunteer for LLS until we find a cure.



New Lifesaving Therapies



Our sustained research investment is helping save and improve the lives of patients. This year the U.S. Food and Drug Administration (FDA) approved 18 treatment options for patients who urgently need them. What's more, LLS played a role in virtually all of these advancements.

A Breakthrough in Cancer: CAR T-Cell Immunotherapy

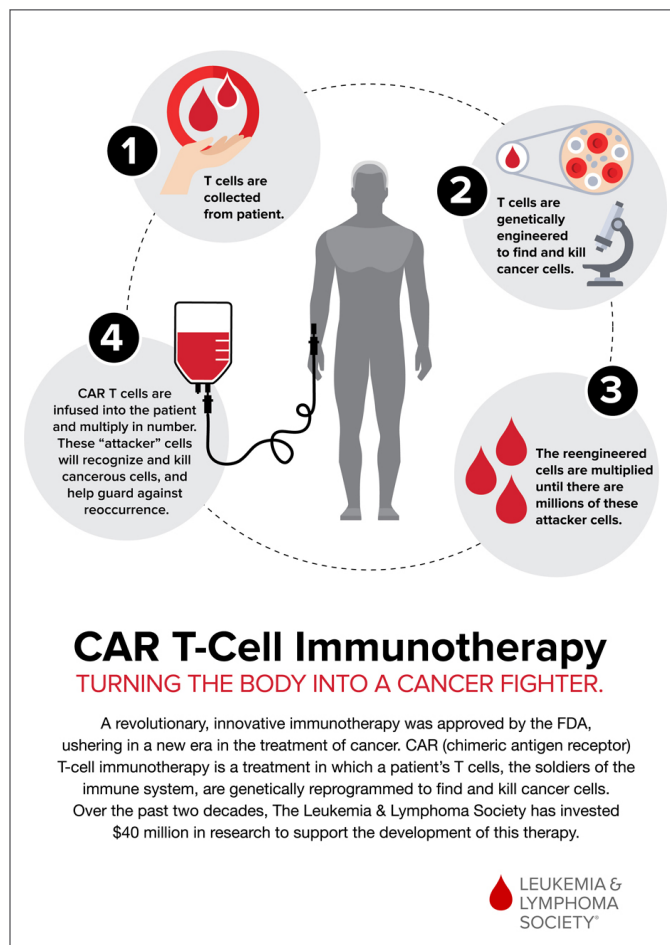
This year we witnessed a historic victory for cancer patients when a revolutionary, innovative immunotherapy was approved, ushering in a new era in the treatment of cancer and other serious and life-threatening diseases.

The FDA approved the first CAR T-cell immunotherapy, a treatment in which a patient's T-cells, the soldiers of the immune system, are genetically reprogrammed to find and kill cancer cells. LLS recognized the early promise of this approach. Over the past two decades, LLS provided \$40 million in funding for more than 15 researchers and companies around the world to develop this revolutionary approach to treating cancer.

LLS's long term investment paid off when two CAR T-cell immunotherapies were approved by the FDA this year:

- **Tisagenlecleucel (Kymriah™)** was the first CAR T-cell immunotherapy approved for children and young adults up to 25 years of age who relapsed or did not respond to therapy for acute lymphoblastic leukemia (ALL).
- **Axicabtagene ciloleucel (Yescarta™)** was approved for adult patients with certain types of large B-cell lymphoma who have not responded to or who have relapsed after at least two other kinds of treatment.

This is an extremely promising development for patients who have otherwise run out of treatment options. It has also dramatically stimulated research and clinical development exploring the use of CAR-T for solid tumors.



VOLUNTEER SPOTLIGHTS



KIM SCHUETZ

My work with LLS began when I was an oncology nurse, and our inpatient unit put together a team for Light The Night (LTN). It was a great way to support my patients and get involved in our new community after moving.

Then, in 2011, the unthinkable happened. My two-year-old son, Austin, was diagnosed with leukemia. It hit us like a ton of bricks. I had been taking care of others with cancer, but never imagined that I'd have to do the same for my son. My mission became to educate others about blood cancers and to raise funds.

Because of breakthrough research funded by LLS, my son is here today. After we ran out of treatment options when he was five years old, we enrolled him in a clinical trial for CAR T-cell

immunotherapy. A therapy LLS has funded for two decades. Today, he is cancer free.

Our family volunteers with LLS in many ways – we started Team Austin's Courage for LTN and I participated in Man & Woman of the Year (MWOY). During my 2014 MWOY campaign, I was able to raise the most funds in 10 weeks while we were traveling back and forth to Philadelphia here Austin was being treated. Winning Woman of the Year was one of my greatest moments, and I'm proud that I could do this in honor of Austin.



JOHN KELLENYI

A tribute by his daughter, Cristina Kellenyi

My dad, one of LLS's most dedicated volunteers, lost his battle to cancer this July. My dad ran a total of 40 marathons in his lifetime. In 1999, he began volunteering for LLS and ran several Team In Training marathons and half marathons. He even learned to swim in order to participate in his first Ironman.

His physical efforts were matched by his fundraising efforts. Prior to becoming so passionately committed to LLS, he was a successful hedge fund manager and research analyst on Wall Street. He applied much of the same acumen he used during his career in finance to his involvement with the local New Jersey chapter. He served as chapter president and as a long-time board member.

My dad also served as National Vice-Chairman for LLS's Beat AML Master Clinical Trial. In addition to his huge efforts for Beat AML toward the end of his life, my father was also heavily involved in fundraising for the first significant advance in AML treatment in 40 years, in addition to many other contributions.

My dad was highly recognized by LLS, receiving the prestigious Spiral of Life award in his final days. He continues to inspire so many people by his determination, heartfelt energy, humility, generosity, selflessness, and hard fought achievements. My dad is greatly missed by LLS and the family that he loves so much.

Beat AML® Master Clinical Trial

Going on the Offensive Against Acute Myeloid Leukemia



LLS is leading the offensive against acute myeloid leukemia, one of the most deadly blood cancers that has seen little change in the standard of care in 40 years and impacts 21,000 Americans annually. LLS is taking a multi-faceted approach with a paradigm-shifting clinical trial as its centerpiece. The Beat AML® Master Clinical Trial builds upon an earlier genetic study commenced in 2013 to better understand the underlying drivers of the disease.

In October 2016, LLS launched an innovative precision medicine Beat AML® Master Clinical Trial to test targeted therapies for acute myeloid leukemia (AML). The unprecedented collaboration includes multiple leading cancer centers and pharmaceutical companies, a clinical research organization, and a genomics analysis company. The protocol for the trial was developed with input from the FDA, which is eager to see new models for cancer clinical trials.

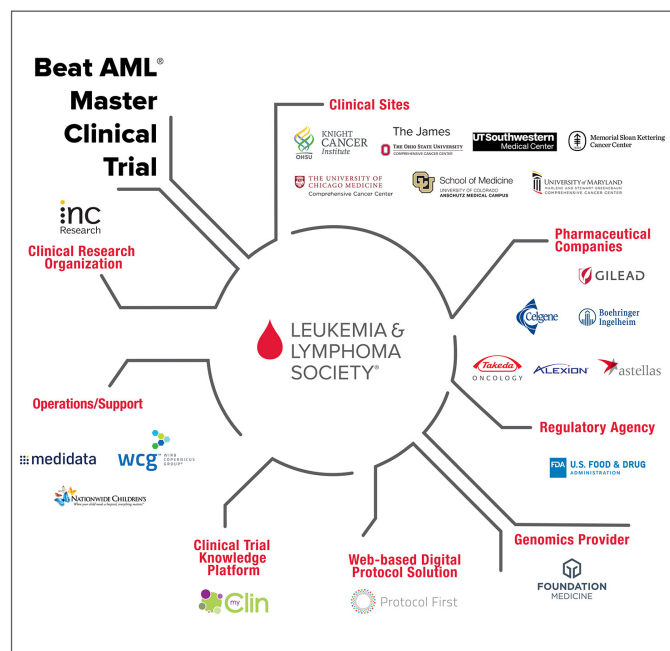
AML is extremely complicated to treat because it is not a single disease, but a group of more than 10 different major subtypes and other rare mutations. With advances in genomics, we can now identify and target specific types of AML. This precision medicine approach is the key to new therapies for patients.

The trial employs advanced genomic technology to identify each patient's individual cancer-driving genetic mutations, and then matches that patient to the most promising, targeted treatment.

"It's the ultimate precision medicine – matching a specific targeted therapy to the specifics of a person's individual leukemia," says one of the trial's co-lead investigators, Ross Levine, MD, of Memorial Sloan Kettering Cancer Center.

LLS is the first nonprofit health organization to sponsor a cancer clinical trial. To date, LLS's trial has exceeded all milestones.

"LLS is the absolute right organization to lead the Beat AML effort because LLS is all about patients," says co-lead investigator John Byrd, MD, of The Ohio State University Comprehensive Cancer Center. "LLS is best positioned to bring this group together toward a common goal."





Patient Education & Support

As the leading source of free blood cancer information, education and support for patients, survivors, families and healthcare professionals, LLS helps patients navigate their cancer treatments and ensures they have access to quality, affordable and coordinated care. Research will help us achieve an end to blood cancers. In the meantime, patients need help before, during and after their diagnosis and treatment. LLS is the leading nonprofit that does just that.

Patient Education & Support



Research will help us achieve an end to blood cancers. In the meantime, patients need help before, during and after their diagnosis and treatment. LLS is the leading nonprofit that does just that.

As the leading source of free blood cancer information, education and support for patients, survivors, families and healthcare professionals, LLS helps patients navigate their cancer treatments and ensures they have access to quality, affordable and coordinated care. In 2017, we:

- **Responded to nearly 18,000 inquiries** to LLS's Information Specialists from people seeking support, information, and resources.
- **Provided \$72.97 million in co-pay financial assistance** supporting 31,026 patients.
- **Provided 339 patients with in-depth clinical trial navigation and support** through LLS's Clinical Trial Support Center.
- **Distributed more than 700,000 educational booklets and fact sheets** about specific diseases.
- **Educated 10,000 patients, caregivers, health care professionals and others** through live web-based and local in-person programs.
- **Reached nearly 6,000 patients and caregivers through LLS Community**, an online social network that provides education and support.
- **Developed an innovative partnership with Walgreens** to enhance support to blood cancer patients and implement a novel pharmacist education and training program.

Reaching patients in their communities

As a community-based voluntary health organization, we have regional and local chapters throughout the United States and Canada so that we can support blood cancer patients in every community. This year through our community-based programs we:

- **Connected 1,100 volunteers with patients and caregivers** diagnosed with the same disease through LLS's Patti Robinson Kaufmann First Connection Program.
- **Facilitated 135 support groups** in local communities led by nurses and social workers.
- **Convened 10 regional Blood Cancer Conferences** with nearly 3,500 patients in attendance.

VOLUNTEER SPOTLIGHTS



GARY THOMPSON

A six-year-old boy named Kethan, who was battling acute lymphoblastic leukemia while my wife battled breast cancer, changed me forever. In 2008, I had been named the first Man of the Year in Austin, Texas. But, my wife and Kethan inspired me to do more. I dusted off my bike and did my first Team in Training ride around Lake Tahoe in 2010.

I participated in that ride for seven more years – only three of which Kethan was alive for. He passed away in summer of 2013, and my wife passed away in fall of 2014. Until my last breath, I promised would do everything I could to fight cancer.

From chairing the Board of Trustees in Austin, serving as a member of the National Board, and chairing LLS's inaugural corporate partnership council, I have been privileged to raise funds and awareness for LLS.

My proudest moment was when LLS and Walgreens announced their collaboration to provide patients and their caregivers with access to up-to-date information to best manage their disease. After making an introduction to Walgreens' then CEO, I worked with my staff partner at LLS for almost two years to bring this collaboration to life.

Through my work with LLS, I have been able to raise awareness and funds, and change the lives of patients. LLS has empowered me to magnify my voice in the fight against cancer.



NANCY H. LAMANNO

In June 2015, I lost my husband Barry to acute myeloid leukemia. He had battled the disease for 18 months, including undergoing a stem cell transplant. When he was diagnosed in December of 2013, the first thing I did was to search online for AML and I found the LLS website and read every word available.

Despite facing a deadly disease and eventually losing the battle, the support we received throughout my husband's treatment made it a surprisingly positive experience. I sold my business during this time and once my full-time job as a caregiver was over, I wanted to take all that knowledge that I had gained and use it for good.

Three times a week I speak with patients and their families about LLS and the wonderful programs and educational information available to them as a Patient and Family Outreach Coordinator for the Georgia Chapter. Families facing a blood cancer diagnosis love to hear that LLS offers financial and emotional support as well as information and education.

I have also become a First Connection volunteer coordinator, joined LLS's advocacy efforts, and volunteer at local events. I receive a far greater benefit by volunteering with LLS than I give – I have a sense of purpose and fulfillment that I have never before experienced.

Celebrating 20 years of helping patients

The year 2017 marked 20 years of LLS's Information Specialists providing personalized support, information and resources to patients and caregivers. Last year Information Specialists answered nearly 18,000 inquiries, providing one-on-one assistance to address patients' and caregivers' specific needs.

Information Specialists are oncology social workers, nurses and health educators who have specialized training in the blood cancers. They spend hours speaking with those impacted by blood cancer about their disease, clinical trials, and financial resources, and guide them to LLS's comprehensive support and educational services. They can be reached at (800) 955-4572 or online at www.LLS.org.

Expansion of Clinical Trial Support Center

This year LLS doubled the capacity of its Clinical Trial Support Center (CTSC), in which specially trained nurses help patients find and enroll in clinical trials based on highly detailed, individualized assessments. The nurses work one-on-one with patients and caregivers to uncover all the important details needed to identify and enroll patients in appropriate trials, from their medical history to their current financial situation. From this information, they conduct a search and provide the patient with a list of trials to take to their physician.

Since it frequently takes time to find an appropriate clinical trial for patients, the CTSC nurses often maintain a relationship with patients and their family for many months and continue to provide support along the way. The majority of patients working with the CTSC have enrolled in one or more clinical trials.



Increasing Myeloma Awareness In African-American Communities

African Americans have twice the incidence of multiple myeloma as white Americans. Recent studies show that African Americans are significantly less likely to receive the newest treatments and combination therapies and more likely to experience treatment delays, including transplant delays.

LLS, with support from The National Black Church Initiative (NBCI), is leading a pilot program to improve access to novel therapies and quality of life among African Americans with myeloma. This program, called Myeloma Link, will provide tools and resources to navigate the treatment landscape more effectively and cope with the disease.

The 18-month pilot program is being carried out in Washington, D.C., and Atlanta, GA. LLS will take learnings from this pilot to expand the program nationally in rural, suburban, and urban areas throughout the country.

Connecting Patients Online

Patients and caregivers told LLS that they wanted to connect with and learn from other patients and caregivers with a similar diagnosis. The solution, LLS Community, is now a place where users go online to share advice, experiences and opinions.

LLS Community is a free online social network that provides support and education to blood cancer patients and their caregivers. It was launched in 2016 and has proved to be a valuable resource for patients and caregivers, growing to nearly 6,000 registered users with over 15,000 user posts in its inaugural year.



Policy & Advocacy

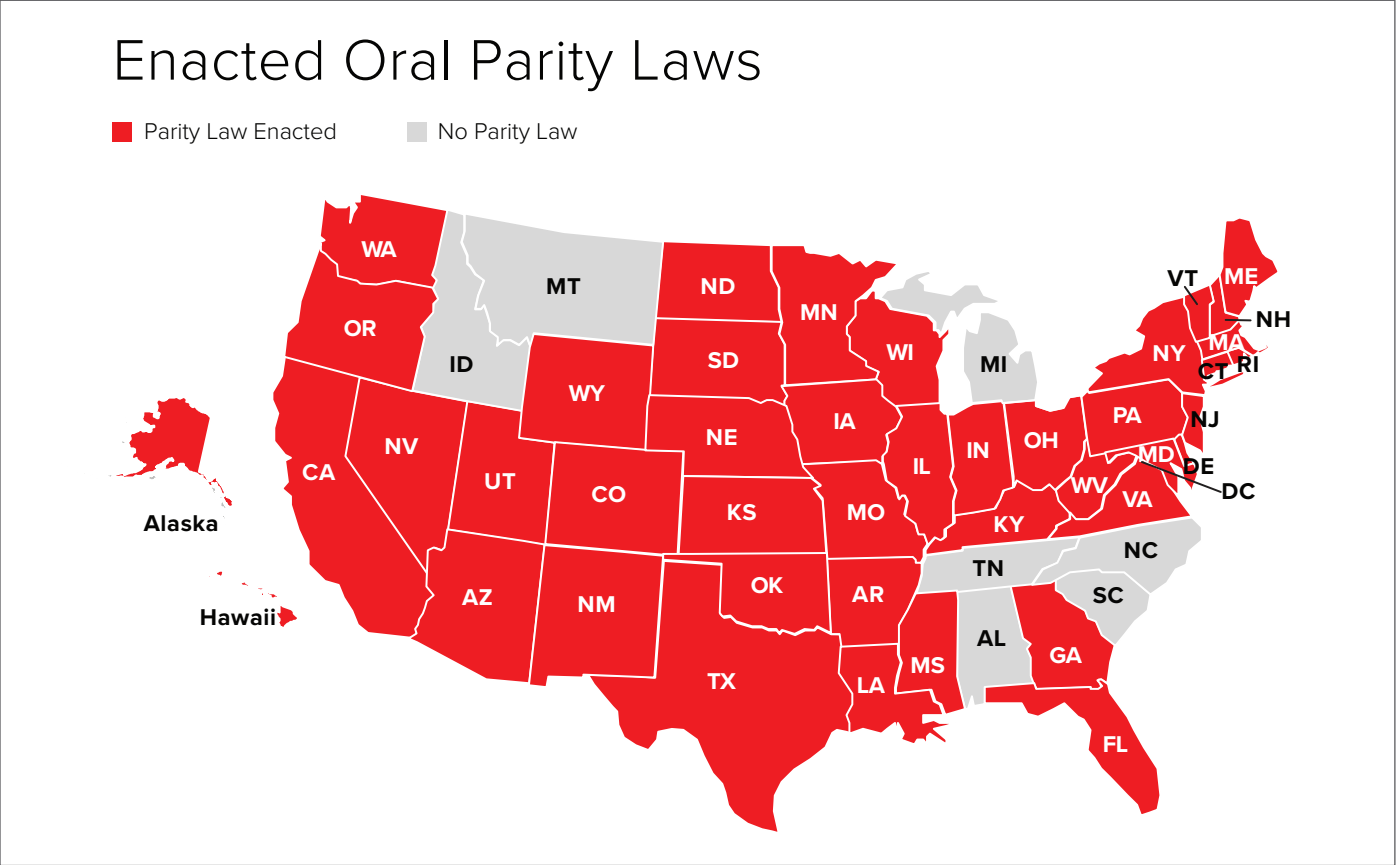
Through our nationwide grassroots network of more than 100,000 volunteers, we advocate for policies at the state and federal level in a commitment to remove barriers to care for blood cancer patients. This year our efforts have helped increase federal research funds, speed the review and approval process of new therapies, and ensure patients are able to access lifesaving treatments.

Policy & Advocacy



State Legislative Victories

This year, LLS helped advance laws in Pennsylvania, Alaska and Arkansas to ensure that health plans provide fair coverage of cancer treatments that are administered in pill form. This brings the total enacted “oral parity” laws to 43 states and Washington, D.C. Next year, LLS will continue the push to secure similar laws in Idaho, Michigan, North Carolina, and Tennessee.



VOLUNTEER SPOTLIGHTS



KATHY HAWKINS

In January 2008, when I was a young, healthy mom of two young boys, I went to a doctor's appointment for fatigue and a pain in my stomach. The next day, I was diagnosed with chronic myeloid leukemia.

My doctor prescribed a new, lifesaving oral treatment, but the out-of-pocket cost was astronomical. Unlike intravenous chemotherapy that is administered in a doctor's office and included under medical coverage, oral cancer treatments are covered through pharmaceutical benefits. Rather than spending a monthly fixed co-pay of about \$30, I had to pay a portion of the total drug cost. In my case, this was \$2,000 per month.

I was unable to afford this crucial medicine, and I knew I was not alone. I wanted to give a voice to cancer patients in Pennsylvania and beyond. I teamed up with LLS on a seven-year effort to advocate for oral parity legislation. I attended legislative meetings and lobby days, spoke with media and reached out to legislators.

On July 8, 2016, Pennsylvania enacted oral parity legislation into law, thanks to the efforts of LLS, its advocates and patients. My involvement with LLS has only deepened since then. This year, I participated in Man & Woman of the Year, and raised \$54,000. I'm proud to continue sharing my story with others, both through my advocacy work at the state and federal levels, and at LLS chapter campaign events. I will continue to advocate for LLS until we find a cure.



AMANDA STEFFY

During my last semester of college, I was diagnosed with chronic myeloid leukemia. Just as I was preparing for track and field season, my world was completely shaken. I did a lot of research to cope with my diagnosis. I learned about LLS and how its research funding was vital to the development of my treatment, imatinib (Gleevec), a revolutionary, targeted cancer therapy.

Within a few months after my treatment, I was able to start running again. I returned to training for my final track season and qualified to run the Boston Marathon. I wanted to give back to LLS because it had given me so much. I would not be here today without LLS-funded research. I decided to get involved with Team in Training (TNT). I started as a participant, then became a mentor and worked

my way up to assistant coach. My first season with TNT was incredibly healing. My diagnosis had felt frightening and isolating, but being around such positive people inspired me to share my own story.

After TNT, I participated in Man & Woman of the Year and funded a grant for CML research. I've continued to be involved in the leadership committee and joined LLS's advocacy efforts. I've been proud to meet with elected officials in Washington D.C. the past two years, and I've continued to work with the congressional representative in my home district. This past year, I served as the California Advocacy Committee captain, and remained a First Connection peer for young adults newly diagnosed with CML.

Volunteering with LLS has helped me come to terms with my diagnosis and feel comfortable opening up about my experiences in the hopes of helping others.

Federal Healthcare Advocacy

As Congress debated changes to federal healthcare, LLS advocated that proposed federal healthcare legislation should provide access to stable, quality, affordable coverage to the thousands of blood cancer patients impacted.

- 25,000+ advocate letters
- 2,000+ calls
- 300+ in-person Congressional meetings
- 8 formal letters and public statements

21st Century Cures Act

LLS helped pass the 21st Century Cures Act into law, ensuring reform that will enable the FDA to speed the review and approval of new therapies. This bipartisan bill committed nearly \$5 billion in additional funding for the National Institute of Health over the next 10 years, funding that is critical to sustain the current momentum to advance our understanding of the treatment of cancer, including blood cancers.

- More than 30,000 letters were sent to members of Congress
- 100's of calls were made to house leaders
- 13,000 letters contributed to the passage of the 21st Century Cures Act

Cost of Cancer Care

The rising cost of care for blood cancer patients has reached a boiling point, with an increasing number of patients foregoing their medications or reducing the dosage or frequency of their doctor prescribed treatments solely for cost reasons. While the cost of drugs makes headlines almost daily, and accounts for 10 percent of health expenditures by patients according to the Centers for Medicare & Medicaid Services, it is just one element of cancer care that causes stress and impeding access to treatment.

In May 2017, in an effort to call attention to this issue, LLS announced a new public position statement on the cost of care and published a range of policy proposals intended to meaningfully reduce costs and mitigate the financial distress facing many patients with cancer. LLS called on every player in the healthcare system – from patient organizations and drug manufacturers, to insurers and pharmacy benefit managers, healthcare providers, hospitals, state and federal governments, and patients themselves – to embrace reforms that promise relief for patients suffering from financial distress.

Learn more at www.lls.org/cancercost.



Fundraising Campaigns

Thousands of volunteers provided their time and talent in 2017 to make our signature fundraising campaigns a success. Through our campaigns, participants help us support lifesaving research, patient support and education, and advocacy efforts that benefit blood cancer patients.

Fundraising Campaigns



Thousands of volunteers provided their time and talent in 2017 to make our signature fundraising campaigns a success. Through our campaigns, participants help us support lifesaving research, patient support and education, and advocacy efforts that benefit blood cancer patients. LLS has been a pioneer in creating theme-driven fundraising campaigns, including:



Light The Night is a powerful campaign bringing light to the darkness of cancer. One million friends, families and co-workers gather together, carrying illuminated lanterns in 150 inspirational evening walks to celebrate, honor or remember those touched by cancer.

Light The Night had a record year, raising \$68.5 million; the campaign has raised more than \$625 million since 1999. LTN increased its revenue by 12 percent and was honored as the Peer-to-Peer Professional Forum's Program of the Year. LTN was named the ninth largest peer-to-peer fundraising program in America and registered the largest dollar increase of any program.

This year, Light The Night introduced Random Acts of Light, engaging celebrities and local heroes to surprise people touched by blood cancers with special meetings, to help brighten their lives during a dark time.



Team In Training continues to be the leading charity program that inspires and supports "teammates" with a unique opportunity to experience personal achievement through the Team that provides camaraderie, experienced coaching and fundraising support, and personal discovery.

Team In Training has raised more than \$1.5 billion over the past 29 years, training more than 650,000 teammates. As it approaches its 30th year, Team In Training and LLS continue to innovate a platform for fundraisers to change lives, both theirs and those impacted by our mission. Our fundraising opportunities have expanded to include high-caliber events in cycling and climbing. We have had numerous fundraisers summit Mount Kilimanjaro, have upcoming trips to Everest Basecamp and opportunities to cycle over some of Europe's historic mountains. LLS is supporting the most pioneering cancer research of our time, and you will find a Team In Training teammate moving to support the mission.



ROSHAN MARKSMAN

In 2011, I was introduced to Team In Training (TNT) through a friend who had just completed the New York City Triathlon with TNT and wanted me to share the great experience. When I joined, I did not have a direct connection to the cause but over the more than six years of my involvement I have met many teammates, friends, supporters and donors who are impacted by blood cancer. This has motivated me to do as much as I can.

I've been involved with LLS in many ways. I have completed 14 fundraising seasons with TNT and my role has evolved from participant, to mentor to team captain. My greatest achievement came last year, when I had the honor of participating in LLS's Man & Woman of the Year campaign as the first-ever representative from Brooklyn, New York. My other proudest achievements: completing my first half-marathon, climbing to the top of Mount Kilimanjaro in Africa with Climb2Cure, and learning to swim in order to complete my first-ever triathlon.

With all my involvement with LLS I have raised more than \$100,000 and I proudly and patiently wait for the day when I can say that I helped contribute to an organization that has developed cures and treatments to help every patient impacted by blood cancer.



Student Series is a service learning, character education, and philanthropy program where students gain the unique experience of helping thousands of people in their fight against blood cancers.

Programs are tailored to each school level so students can grow with Student Series and have an even greater impact on the lives of patients each year. More than 13 million students and 850,000 educators in 27,000 schools across the United States participate annually. Since it began, students have raised more than \$315 million to fund breakthrough therapies and patient services, with more than \$26 million in this year alone.

STUDENTS OF THE YEAR

One of the premier fundraising programs within the Student Series is the Students of the Year campaign — a campaign that mobilized more than 400 motivated high school students across the country to raise an astounding \$6 million in its inaugural year. Ella Behnke is a 16-year-old from San Antonio, TX who earned the winning title, “National Student of the Year,” raising more than \$334,768 for cancer cures!



Man & Woman of the Year is a truly unique fundraising campaign. In an annual competition in communities across the country, candidates compete in honor of children who are local blood cancer survivors, the Boy & Girl of the Year, by raising funds for LLS.

By engaging influential community leaders, Man & Woman of the Year taps into the spirit of innovation and entrepreneurship that has allowed LLS to achieve great success in funding groundbreaking research to advance cancer cures. The winners receive LLS’s “Man & Woman of the Year” titles. Every dollar raised counts as one vote and the titles are awarded to the man and woman with the most votes at the end of 10 weeks. Top local fundraisers become eligible to win national titles. In 2017, candidates raised \$40 million.



Leukemia Cup Regatta is a thrilling series of sailing events that combines the joy of boating with the important task of raising money to cure cancer. At events held at yacht clubs across North America, skippers register their boats and recruit friends and colleagues to help crew and raise funds. Crew members seek donations from friends, family, co-workers and employers to sponsor their boat.

More than \$62 million has been raised through the Leukemia Cup Regatta series for lifesaving research and patient services since its start 30 years ago.

VOLUNTEER SPOTLIGHT: MARIA AVILA

Our son Enrique was only two years old when he was diagnosed with acute myeloid leukemia (AML). Our life changed in a matter of minutes. At the age of three, Enrique received a bone marrow transplant and today, he is a healthy 17 year old.

Soon after his diagnosis, we received an educational resource from LLS, which provided information we needed and gave us hope. Our family wanted to be part of an organization that brought hope and information to families while funding research for cures. We joined Light The Night and formed “Team Familia Avila & Amigos” to raise funds and walk with hundreds of other survivors, caregivers and supporters.

We are so proud to work with LLS to bring light to the darkness of cancer, in honor of our son and the many other families impacted by blood cancers.





Partnerships



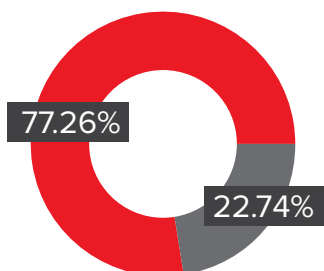
We are grateful to our partners and sponsors, who harness the power of their consumers, communities and employees to help fight blood cancers.

For a full list of partners, go to www.lls.org/partners.



Financials

2017 ANNUAL REPORT



Total Program Services	77.26%
Total Supporting Services	22.74%
Total Expenses	100%

We've always believed the most efficient way to finding cures for blood cancer is by directing as much funding as possible to the best and most innovative research, while providing patient support and education, and tirelessly advocating on behalf of patients. Your support is invested wisely.

Independent Auditors' Report

The Board of Directors The Leukemia & Lymphoma Society, Inc.:

We have audited the accompanying consolidated financial statements of The Leukemia & Lymphoma Society, Inc. (LLS), which comprise the consolidated balance sheet as of June 30, 2017, and the related consolidated statements of activities, functional expenses and cash flows for the year then ended, and the related notes to the consolidated financial statements.

Management's Responsibility for the Consolidated Financial Statements

Management is responsible for the preparation and fair presentation of these consolidated financial statements in accordance with U.S. generally accepted accounting principles; this includes the design, implementation, and maintenance of internal control relevant to the preparation and fair presentation of consolidated financial statements that are free from material misstatement, whether due to fraud or error.

Auditors' Responsibility

Our responsibility is to express an opinion on these consolidated financial statements based on our audit. We conducted our audit in accordance with auditing standards generally accepted in the United States of America. Those standards require that we plan and perform the audit to obtain

reasonable assurance about whether the consolidated financial statements are free from material misstatement.

An audit involves performing procedures to obtain audit evidence about the amounts and disclosures in the consolidated financial statements. The procedures selected depend on the auditors' judgment, including the assessment of the risks of material misstatement of the consolidated financial statements, whether due to fraud or error. In making those risk assessments, the auditor considers internal control relevant to the organization's preparation and fair presentation of the consolidated financial statements in order to design audit procedures that are appropriate in the circumstances, but not for the purpose of expressing an opinion on the effectiveness of the organization's internal control. Accordingly, we express no such opinion. An audit also includes evaluating the appropriateness of accounting policies used and the reasonableness of significant accounting estimates made by management, as well as evaluating the overall presentation of the consolidated financial statements.

We believe that the audit evidence we have obtained is sufficient and appropriate to provide a basis for our audit opinion.

Opinion

In our opinion, the consolidated financial statements referred to above present fairly, in all material respects, the financial position of The Leukemia & Lymphoma Society, Inc. as of June 30, 2017, and the changes in its net assets and its cash flows for the year then ended in accordance with U.S. generally accepted accounting principles.

Report on Summarized Comparative Information

We have previously audited LLS's consolidated financial statements, and we expressed an unmodified opinion on those audited consolidated financial statements in our report dated November 2, 2016. In our opinion, the summarized comparative information presented herein as of and for the year ended June 30, 2016 is consistent, in all material respects, with the audited consolidated financial statements from which it has been derived.

KPMG LLP

October 27, 2017

Consolidated Balance Sheet

The Leukemia & Lymphoma Society, Inc. / June 30, 2017 (with comparative amounts at June 30, 2016) (In thousands)

Assets	<u>2017</u>	<u>2016</u>
Cash and cash equivalents	\$ 41,401	18,596
Prepaid expenses and other assets	3,613	2,906
Contribution and other receivables, net (note 5)	17,785	17,244
Investments (note 3)	209,421	168,293
Fixed assets, net (note 8)	<u>10,119</u>	<u>16,946</u>
Total assets	<u>\$ 282,339</u>	<u>223,985</u>
Liabilities and Net Assets		
Liabilities:		
Accounts payable and accrued expenses	\$ 21,711	13,655
Deferred revenue (note 6)	14,028	12,916
Awards and grants payable (note 2)	64,052	60,451
Co-Pay assistance payable (note 2)	20,071	13,469
Other long-term liabilities (note 9)	<u>3,167</u>	<u>1,638</u>
Total liabilities	<u>123,029</u>	<u>102,129</u>
Commitments and contingencies (notes 2 and 10)		
Net assets (note 4):		
Unrestricted	126,993	84,178
Temporarily restricted	29,161	34,241
Permanently restricted	<u>3,156</u>	<u>3,437</u>
Total net assets	<u>159,310</u>	<u>121,856</u>
Total liabilities and net assets	<u>\$ 282,339</u>	<u>223,985</u>

See accompanying notes to consolidated financial statements.

Consolidated Statement of Activities

The Leukemia & Lymphoma Society, Inc. / Year ended June 30, 2017
(with summarized totals for the year ended June 30, 2016) (In thousands)

	Unrestricted	Temporarily restricted	Permanently restricted	Total	
				2017	2016
Operating revenue:					
Campaign contributions	\$ 237,443	21,077	5	258,525	258,839
Less direct donor benefit costs	(25,955)	—	—	(25,955)	(26,348)
Net campaign contributions	211,488	21,077	5	232,570	232,491
Co-Pay contributions (note 2)	—	77,779	—	77,779	46,379
Therapy acceleration program contractual return (note 1)	29,548	—	—	29,548	—
Donated services, goods and media (note 7)	14,594	—	—	14,594	11,175
Legacies and other revenue	5,276	15	—	5,291	7,946
Service revenue	3,847	—	—	3,847	—
Net interest and dividend income	2,730	136	—	2,866	1,352
Net assets released from restrictions (note 2):					
Co-Pay assistance	78,591	(78,591)	—	—	—
Satisfaction of other donor restrictions	26,426	(26,426)	—	—	—
Total operating revenue	372,500	(6,010)	5	366,495	299,343
Operating expenses (notes 7 and 11):					
Program services:					
Research	65,067	—	—	65,067	54,691
Patient and community service	125,677	—	—	125,677	89,209
Public health education	48,138	—	—	48,138	42,881
Professional education	21,698	—	—	21,698	15,373
Total program services	260,580	—	—	260,580	202,154
Supporting services:					
Management and general	29,049	—	—	29,049	27,553
Fund raising	47,656	—	—	47,656	44,749
Total supporting services	76,705	—	—	76,705	72,302
Total operating expenses	337,285	—	—	337,285	274,456
Change in net assets from operating activities	35,215	(6,010)	5	29,210	24,887
Foreign currency translation adjustment	(180)	(4)	—	(184)	(110)
Net increase (decrease) in fair value of investments (note 3)	7,780	648	—	8,428	(4,157)
Net assets transferred and reclassified	—	286	(286)	—	552
Change in net assets	42,815	(5,080)	(281)	37,454	21,172
Net Assets:					
Beginning of year	84,178	34,241	3,437	121,856	100,684
End of year	\$ 126,993	29,161	3,156	159,310	121,856

See accompanying notes to consolidated financial statements.

Consolidated Statement of Functional Expenses

The Leukemia & Lymphoma Society, Inc. / Year ended June 30, 2017 (with comparative totals for the year ended June 30, 2016) (In thousands)

	Program Services						Supporting Services			Total		Direct donor benefit costs	
	Research	Patient and community service	Public health education	Professional education	Total	Management and general	Fund raising	Total	2017	2016	2017	2016	
													Total
Awards and grants (note 2)	\$ 42,219	—	—	—	42,219	—	—	—	42,219	40,011	—	—	
Therapy acceleration program (note 2)	4,711	—	—	—	4,711	—	—	—	4,711	9,343	—	—	
Clinical trial	2,142	—	—	—	2,142	—	—	—	2,142	—	—	—	
Financial aid to patients	—	1,703	—	—	1,703	—	—	—	1,703	1,299	—	—	
Co-Pay assistance (note 2)	—	72,969	—	—	72,969	—	—	—	72,969	40,030	—	—	
Co-Pay processing fees	—	4,595	—	—	4,595	—	—	—	4,595	3,375	—	—	
Donated services, goods and media (note 7)	4,021	2,563	4,095	245	10,924	279	3,391	3,670	14,594	11,175	—	—	
Salaries and employee benefits and taxes (note 9)	5,840	25,488	24,124	12,572	68,024	16,212	17,466	33,678	101,702	90,623	—	—	
Professional fees	2,946	3,891	4,798	2,473	14,108	3,580	5,019	8,599	22,707	18,658	3,305	1,725	
Printing, advertising, and supplies	97	3,489	3,819	1,292	8,697	2,166	6,718	8,884	17,581	16,794	5,090	5,052	
Occupancy, telephone and insurance (note 10)	367	3,174	2,882	1,186	7,609	1,719	2,583	4,302	11,911	11,863	—	—	
Travel and meetings	817	2,056	2,329	1,625	6,827	1,854	1,485	3,339	10,166	7,482	14,877	13,672	
Equipment rentals and maintenance	1,109	1,256	1,209	689	4,263	1,032	1,021	2,053	6,316	4,828	—	—	
Postage and shipping	17	1,309	1,878	362	3,566	390	2,624	3,014	6,580	7,302	—	—	
Miscellaneous	170	1,233	1,026	556	2,985	689	701	1,390	4,375	5,223	2,683	5,899	
Impairment of fixed assets (note 8)	—	—	—	—	—	—	5,434	5,434	5,434	—	—	—	
Depreciation and amortization	611	1,951	1,978	698	5,238	1,128	1,214	2,342	7,580	6,450	—	—	
Total expenses	\$ 65,067	125,677	48,138	21,698	260,580	29,049	47,656	76,705	337,285	274,456	25,955	26,348	

See accompanying notes to consolidated financial statements.

Consolidated Statement of Cash Flows

The Leukemia & Lymphoma Society, Inc. / Year ended June 30, 2017
(with comparative amounts for the year ended June 30, 2016) (In thousands)

	2017	2016
Cash flows from operating activities:		
Change in net assets	\$ 37,454	21,172
Adjustments to reconcile change in net assets to net cash provided by operating activities:		
Net (increase) decrease in fair value of investments	(8,428)	4,157
Impairment of fixed assets	5,434	—
Depreciation and amortization	7,580	6,450
Provision for uncollectible accounts	188	(445)
Changes in operating assets and liabilities:		
Prepaid expenses and other assets	(707)	3,143
Contributions and other receivables	(729)	(7,810)
Accounts payable and accrued expenses	8,056	(3,320)
Other long-term liabilities	1,529	197
Deferred revenue	1,112	(4,886)
Awards and grants payable	3,601	(8,884)
Co-Pay assistance payable	6,602	(996)
Net cash provided by operating activities	<u>61,692</u>	<u>8,778</u>
Cash flows from investing activities:		
Purchases of fixed assets	(6,187)	(8,570)
Purchases of long-term investments	(117,279)	(238,736)
Sales of investments	84,579	204,227
Net cash used in investing activities	<u>(38,887)</u>	<u>(43,079)</u>
Net increase (decrease) in cash and cash equivalents	22,805	(34,301)
Cash and cash equivalents at beginning of year	<u>18,596</u>	<u>52,897</u>
Cash and cash equivalents at end of year	<u>\$ 41,401</u>	<u>18,596</u>

See accompanying notes to consolidated financial statements.

Notes to Consolidated Financial Statements

The Leukemia & Lymphoma Society, Inc. / June 30, 2017 (Amounts in thousands)

1) Organization and Summary of Significant Accounting Policies

A) Organization

The Leukemia & Lymphoma Society, Inc. (LLS) is the world's largest voluntary health agency dedicated to finding cures for blood cancers and providing services to blood cancer patients, their families, and caregivers. LLS's mission is to cure leukemia, lymphoma, Hodgkin's disease, and myeloma and improve the quality of life of patients and their families. LLS research grants have funded many of today's most promising advances for the treatment of blood cancer patients, including targeted therapies and immunotherapies. LLS is a leading source of publicly available information regarding blood cancer, and education and support programs. LLS influences public policies that accelerate the development and approval of new blood cancer therapies and advocates for all blood cancer patients and their families, helping patients navigate their cancer treatments and access to quality, affordable and coordinated care. LLS is dedicated to removing barriers to care by representing the healthcare and medical research interests of patients and families to policy makers at all levels of government.

B) Principles of Consolidation

The accompanying consolidated financial statements include the accounts of LLS that encompass the National Office of LLS and its fifty-six chapters in the United States, and LLS's not-for-profit affiliates, including The Leukemia & Lymphoma Society of Canada, Inc. (LLSC) and its five chapters in Canada, The Leukemia & Lymphoma Society Research Programs, Inc. (LLSRP), The Leukemia & Lymphoma Society Research Foundation (LLSRF), Beat AML, LLC (BAML) and PearlPoint Cancer Support, Inc. (PPCS). Effective March 28, 2016, LLS became the sole member of PPCS. As part of the assumption of control, LLS recognized a transfer of net assets of \$552. All significant inter-company and intra-LLS accounts and transactions have been eliminated in consolidation.

C) Tax-Exempt Status

LLS, LLSRP, LLSRF and PPCS qualify as charitable organizations as defined by Internal Revenue Code Section 501(c)(3) and, accordingly, are exempt from federal income taxes under Internal Revenue Code Section 501(a). Additionally, since these organizations are publicly supported, contributions qualify for the maximum charitable contribution deduction under the Internal Revenue Code.

LLSC is registered as a charitable organization under the Income Tax Act (Canada) and is, therefore, not subject to income taxes if certain disbursement requirements are met.

BAML is a single-member limited liability company and is a disregarded pass-through entity. Accordingly, all revenue and expenses are included in LLS. Income of BAML is exempt from federal income taxes under Internal Revenue Code Section 501(c)(3) consistent with LLS.

LLS and PPCS recognize the effect of income tax positions only if those tax positions are more likely than not to be sustained. Income generated from activities unrelated to exempt purposes are subject to tax under Internal Revenue Code Section 511. There were no entities that recognized any unrelated business income tax liability for the years ended June 30, 2017 and 2016.

D) Estimates

The preparation of the consolidated financial statements in conformity with generally accepted accounting principles requires LLS's management to make estimates and assumptions that affect the amounts reported in the consolidated financial statements and accompanying notes. The significant estimates made in the preparation of these consolidated financial statements include the fair value of alternative investments, allowance for uncollectible accounts, allocation of expenses, and valuation of donated goods, services and media. Actual results could differ from those estimates.

(continues »)

Notes to Consolidated Financial Statements

The Leukemia & Lymphoma Society, Inc. / June 30, 2017 (Amounts in thousands)

E) Risks and Uncertainties

LLS invests in various investment securities. Investment securities are exposed to various risks such as interest rate risks, fluctuations in market values, and credit risks. Due to the level of risk associated with certain investment securities, it is at least reasonably possible that changes in the values of investment securities will occur in the near term and that such changes could materially affect the amounts reported in the consolidated balance sheet.

LLS's principal source of revenue is contributions by the general public. Accordingly, LLS's operations are dependent upon individual contributions, that are affected by general economic conditions, employment levels, and other factors over which LLS has little or no control. By contrast to the granularity of the general public donations, the Co-Pay program in 2017 and 2016 was funded by eight and nine donors, respectively. In addition, the Beat AML Master Trial was primarily funded by five donors in 2017.

F) Summarized Financial Information

The consolidated financial statements are presented with 2016 summarized or comparative information. With respect to the consolidated statement of activities, such prior year information is not presented by net asset class and, in the consolidated statement of functional expenses, 2016 expenses by object are presented in total rather than by functional category. Accordingly, such information should be read in conjunction with LLS's 2016 consolidated financial statements from which the summarized information was derived.

G) Subsequent Events

LLS evaluated subsequent events after the balance sheet date of June 30, 2017 through October 27, 2017, which was the date the consolidated financial statements were issued, and concluded that no additional disclosures are required.

H) Net Asset Classifications

To ensure observance of limitations and restrictions placed on the use of resources available to LLS, funds that have similar characteristics have been classified into three net asset categories as follows:

Unrestricted net assets: Consist of funds that are fully available, at the discretion of LLS's Board of Directors, for LLS to utilize in any of its programs or supporting services.

Temporarily restricted net assets: Consist of funds that are restricted by donors for a specific time period and/or purpose.

Permanently restricted net assets: Consist of funds that contain donorimposed restrictions requiring that the principal be invested in perpetuity. Income earned on these funds is recorded as temporarily restricted net assets and is released from restriction when the donor stipulated purpose has been fulfilled and/or the amount has been appropriated in compliance with the Board-approved spending policy (note 4).

I) Foreign Currency Translation

LLSC uses the Canadian dollar as its functional currency. Accordingly, the currency translation of the financial statements of LLSC to U.S. dollars is included as a translation adjustment in the consolidated statement of activities.

J) Fair Value Measurements

Fair value is defined as the exchange price that would be received for an asset or paid to transfer a liability (an exit price) in the principal or most advantageous market for the asset or liability in an orderly transaction between market participants at the measurement date. The three levels of the fair value hierarchy are as follows:

Level 1 inputs are quoted or published prices (unadjusted) in active markets for identical assets or liabilities that a reporting entity has the ability to access at the measurement date.

(continues »)

Notes to Consolidated Financial Statements

The Leukemia & Lymphoma Society, Inc. / June 30, 2017 (Amounts in thousands)

- Level 2 inputs other than quoted or published prices included within Level 1 that are observable for the asset or liability, either directly or indirectly.
- Level 3 unobservable inputs for the asset or liability.

LLS follows the provisions of Accounting Standards Codification (ASC) 820, *Fair Value Measurement*, for its alternative investments that do not have readily determinable fair values, including hedge funds, limited partnerships, and other funds. This guidance allows, as a practical expedient, for the estimation of the fair value of investments in investment companies for which the investment does not have a readily determinable fair value, using net asset value (NAV) per share or its equivalent, as reported by the investment managers.

The classification of investments in the fair value hierarchy is not necessarily an indication of the risks, liquidity, or degree of difficulty in estimating the fair value of each investment's underlying assets and liabilities.

K) Contributions, Grants and Deferred Revenue

Contributions are recorded as revenue, at their fair value, when received or promised unconditionally. Contributions received with donor restrictions that limit their use are reported as either temporarily or permanently restricted revenue. When a donor restriction is met through the passage of time or fulfillment of a purpose restriction, temporarily restricted net assets are reclassified to unrestricted net assets and reported in the consolidated statement of activities as net assets released from restrictions. Conditional contributions are recognized as revenue when the conditions have been substantially met. Certain grants are accounted for as exchange transactions whereby revenue is recognized when the related expenses are incurred. Amounts received under these arrangements but not yet expended are reported as deferred revenue.

L) Therapy Acceleration Program Contractual Return

In January 2009, as part of its Therapy Acceleration Program (TAP), LLS entered into an agreement with Celator Pharmaceuticals, Inc. (Celator) through which LLS provided funding of approximately \$4,100 to Celator in support of the Phase 2 study of Celator's lead compound Vyxeos™ (daunorubicin and cytarabine liposome for injection) for the treatment of Acute Myeloid Leukemia (AML). From 2012 through 2016, LLS provided funding of an additional \$5,000 for the Phase 3 clinical study of Vyxeos™. LLS provisions of funding to Celator were based on clinical milestones.

As part of the agreement, Celator was obligated to make payments to LLS relative to the timing of the product commercialization and other liquidity events. In July 2016, Jazz Pharmaceuticals (Jazz) completed the purchase of Celator, triggering a payment of \$13,716 to LLS. In late 2016, Jazz terminated the agreement with LLS triggering a onetime contract termination fee of \$11,612 to eliminate potential future royalty payments related to Vyxeos™. The total amount of the return to LLS from its TAP investment in Celator was \$25,328.

The remaining \$4,220 of TAP contractual return comes from various other TAP investments.

M) Service Revenue

Service revenue is accounted for as an exchange transaction whereby revenue is recognized when the related expenses are incurred. Amounts received under these arrangements but not yet expended are reported as deferred revenue.

N) Donated Goods and Services

LLS has determined that certain of the donated goods and services it receives meet the criteria for recognition in the consolidated financial statements. The value of contributed goods was determined based on fair market value estimates. The value of contributed services was determined for volunteers that possess specialized skills, and would otherwise need to be purchased. These goods and services are recognized as revenue and expense (note 7).

(continues »)

Notes to Consolidated Financial Statements

The Leukemia & Lymphoma Society, Inc. / June 30, 2017 (Amounts in thousands)

O) Donated Media

LLS has conducted national public service announcements (PSA) media campaigns and benefited from donated media time that was aired on television and radio. The value of contributed media, which is recognized in the consolidated financial statements, was estimated based on the placement, audience, and demographics of the PSA's (note 7).

P) Cash Equivalents

Cash equivalents consist of short-term investments with an original maturity of three months or less from date of purchase, except for amounts held in investments.

Q) Investments

Investments are stated at fair value based upon quoted or published market prices, except for the fair values of alternative investments which are based on NAVs provided by the fund managers or general partners, based upon the underlying net assets of the funds consistent with the concepts of ASC 820. These values are reviewed and evaluated by management.

R) Fixed Assets and Depreciation

Fixed assets, which consist principally of equipment, software, and leasehold improvements, are recorded at cost, and are depreciated or amortized using the straight-line method over the estimated useful lives of the assets or the terms of the leases, if shorter, ranging 2 to 10 years (leasehold improvements 7 years; furniture, fixtures, and office equipment 7 to 10 years, and computer equipment and software 2 to 5 years).

S) Other Long-Term Liabilities

Other long-term liabilities represent LLS's liability for the Internal Revenue Code Section 457 deferred compensation plans recorded at fair market value (note 9) and straight-line rent of office leases (note 10).

T) Professional Fees

Professional fees included in the consolidated financial statements principally include professional fundraising fees, contracted software development, and legal and auditing fees.

U) Reclassifications

Certain reclassifications of 2016 amounts have been made to conform to the 2017 presentation.

2) Research and Co-Pay Assistance Program

LLS has various activities that are utilized to carry out its mission as presented below:

Research

Awards and Grants: Awards and grants for research are approved by LLS's Board of Directors and are recognized as expense when contractual conditions have been satisfied. The budgets for multi-year grants, which are generally two to five years in length, are approved on an annual basis and may be terminated at the discretion of LLS's Board of Directors. LLS has multi-year grant commitments of \$45,410 at June 30, 2017, which are conditioned upon future events and, accordingly, are not recorded. LLS has unconditional grants payable of \$64,052 and \$60,451 at June 30, 2017 and 2016, respectively, which are anticipated to be paid in the next year. Grant refunds of approximately \$923 and \$450 as of June 30, 2017 and 2016, respectively, have been netted against awards and grants expense.

(continues »)

Notes to Consolidated Financial Statements

The Leukemia & Lymphoma Society, Inc. / June 30, 2017 (Amounts in thousands)

TAP: TAP is LLS's strategic initiative to speed the development of blood cancer treatments and supportive diagnostics by creating business alliances with biotechnology and pharmaceutical companies. TAP provides funding for investigational new drug enabling studies and clinical-stage projects. TAP contracts are recognized as an expense in the year program milestones are achieved. Multi-year contracts, which are generally two to three years in length, are reviewed against milestones on a quarterly basis and may be terminated at the discretion of LLS's Board of Directors. LLS has contract commitments of \$9,144 and \$10,214 at June 30, 2017 and 2016, respectively, that are conditioned upon future events and, accordingly, are not recorded.

Commitments for the awards and grants and TAP programs are contingent upon the satisfactory completion of milestones and/or other conditions in the grant and contract agreements. If such conditions are satisfied, the amounts are estimated to be paid as follows:

Year ending June 30:

2018	\$	28,702
2019		19,101
2020 and thereafter		<u>6,751</u>
Total	\$	<u><u>54,554</u></u>

Co-Pay Assistance Program

Co-Pay Assistance Program: The Co-Pay Assistance program offers financial assistance to patients in meeting their insurance Co-Pay obligations for prescription medications or private/public health insurance premiums. Amounts awarded under the program are expensed in the year approved based on the available funding in the program. Revenue is recognized when the grants are received while expenses are recognized as patients are approved for participation according to program criteria. The Co-Pay Assistance payable of \$20,071 and \$13,469 has been established based on approved patient applications received through June 30, 2017 and 2016, respectively. At June 30, 2017, temporarily restricted net assets include \$8,148 received in 2017, which are available for expenditure and are intended to be awarded in fiscal 2018.

The following summarizes the activities of the Co-Pay Assistance program in 2017 and 2016.

	<u>2017</u>	<u>2016</u>
Beginning balance	\$ 8,960	7,254
Co-Pay contributions	77,779	46,379
Amount expended during the year:		
Direct assistance to patients	(72,969)	(40,030)
Other expenses incurred and reimbursed under the contract	<u>(5,622)</u>	<u>(4,643)</u>
Amounts available for expenditures in the next year	<u><u>\$ 8,148</u></u>	<u><u>8,960</u></u>

(continues »)

Notes to Consolidated Financial Statements

The Leukemia & Lymphoma Society, Inc. / June 30, 2017 (Amounts in thousands)

3) Investments

The following tables present LLS's fair value hierarchy of investments measured at fair value on an annual basis as of June 30, 2017 and 2016:

	<u>2017</u>	<u>Level 1</u>	<u>Level 2</u>	<u>Level 3</u>
Money market funds and cash	\$ 63,155	63,155	—	—
Fixed income:				
Corporate bonds	49,312	49,312	—	—
Government securities and other	2,098	2,098	—	—
Equities:				
Large cap equity	32,356	32,356	—	—
International equity	30,261	30,261	—	—
Small/mid cap equity	20,813	20,813	—	—
Commodities	3,566	3,566	—	—
	<u>201,561</u>	<u>\$ 201,561</u>	<u>—</u>	<u>—</u>
Investments reported at net asset value:				
Multi strategy hedge funds	<u>7,860</u>			
Total investments reported at net asset value	<u>7,860</u>			
	<u>\$ 209,421</u>			

	<u>2016</u>	<u>Level 1</u>	<u>Level 2</u>	<u>Level 3</u>
Money market funds and cash	\$ 58,704	58,704	—	—
Fixed income:				
Corporate bonds	36,228	36,228	—	—
Government securities and other	2,032	2,032	—	—
Equities:				
Large cap equity	22,466	22,466	—	—
International equity	20,406	20,406	—	—
Small/mid cap equity	10,429	10,429	—	—
Real estate	5,293	5,293	—	—
Commodities	2,996	2,996	—	—
	<u>158,554</u>	<u>\$ 158,554</u>	<u>—</u>	<u>—</u>
Investments reported at net asset value:				
Multi strategy hedge funds	7,503			
Long/short equities	<u>2,236</u>			
Total investments reported at net asset value	<u>9,739</u>			
	<u>\$ 168,293</u>			

(continues »)

Notes to Consolidated Financial Statements

The Leukemia & Lymphoma Society, Inc. / June 30, 2017 (Amounts in thousands)

In 2016, LLS transitioned from a traditional Investment custodian to an Outsourced Chief Investment Officer. In this process, LLS liquidated its investment portfolio and reinvested all funds.

Investment expenses totaled \$376 and \$560 for the years ended June 30, 2017 and 2016, respectively. The unrealized gains were \$4,504 and \$3,513 for the years ended June 30, 2017 and 2016, respectively.

LLS's alternative investments are diversified across two investment strategies, as follows:

1. *Multi strategy hedge funds* – represent investments in a broad range of investment strategies that seek to exploit opportunities as they occur in the markets due to temporary dislocations or structural inefficiencies and include event-driven strategies, distressed debt, merger and other arbitrage, and value investing.
2. *Long/short equities* – primarily investments in funds that, in turn, invest in liquid, marketable securities, attempting to realize gains through the identification of mispriced securities.

These strategies create indirect exposure to LLS through short sales of securities, trading in future and forward contracts, and other derivative products. Derivatives are investment contracts used to hedge risk. While these financial instruments may contain varying degrees of risk, LLS's risk with respect to such transactions is limited to its capital balance in each investment.

LLS's alternative investments contain various redemption restrictions with required written notice ranging from 45–95 days. By contrast, all of LLS's nonalternative investments are highly liquid and can be redeemed daily without restriction. As of June 30, 2017 and 2016, the following table summarizes the redemption provisions for those investments reported at NAV:

	<u>2017</u>	<u>2016</u>
Redemption period:		
Quarterly	\$ 6,265	6,003
Annual	<u>1,595</u>	<u>3,736</u>
Total	<u>\$ 7,860</u>	<u>9,739</u>

As of June 30, 2017 and 2016, LLS had no unfunded commitments on its alternative investments.

4) Temporarily and Permanently Restricted Net Assets

Temporarily restricted net assets and the income earned on permanently restricted net assets are available for the following purposes at June 30, 2017 and 2016:

	<u>2017</u>		<u>2016</u>	
	Temporarily restricted	Permanently restricted	Temporarily restricted	Permanently restricted
Time restrictions	\$ 6,297	—	272	—
Research	7,097	3,035	19,377	3,280
Patient service	7,533	—	5,367	—
Co-Pay assistance	8,148	—	8,960	—
Other	<u>86</u>	<u>121</u>	<u>265</u>	<u>157</u>
Total	<u>\$ 29,161</u>	<u>3,156</u>	<u>34,241</u>	<u>3,437</u>

(continues »)

Notes to Consolidated Financial Statements

The Leukemia & Lymphoma Society, Inc. / June 30, 2017 (Amounts in thousands)

LLS follows the provisions of the New York Prudent Management of Institutional Funds Act, which imposes guidelines on the management and investment of endowment funds. LLS has interpreted the relevant law as allowing LLS to appropriate for expenditure or accumulate so much of an endowment fund as LLS determines is prudent considering the uses, benefits, purposes, and duration for which the endowment fund is established, subject to the intent of the donor as expressed in the gift instrument.

LLS has adopted investment and spending policies for endowment assets that attempt to provide a predictable stream of funding to programs supported by its endowment funds while seeking to protect the original value of the gift. The spending rate policy at June 30, 2017 and 2016 was 4%, plus any additional amounts advised by donors. Under this policy, the endowment assets are invested in a manner that is intended to produce results consistent with LLS's overall investment strategy.

The following table presents changes in the donorrestricted endowment funds for the year ended June 30, 2017:

	Temporarily restricted	Permanently restricted	Total
Endowment net assets at July 1	\$ 2,962	3,437	6,399
Investment income	428	—	428
Net appreciation	335	—	335
Contributions	—	5	5
Reclassifications	(347)	(286)	(633)
Appropriation for expenditure	(252)	—	(252)
Endowment net assets at June 30	<u>\$ 3,126</u>	<u>3,156</u>	<u>6,282</u>

The following table presents changes in the donor-restricted endowment funds for the year ended June 30, 2016:

	Temporarily restricted	Permanently restricted	Total
Endowment net assets at July 1	\$ 3,086	3,690	6,776
Investment (loss) income	(164)	64	(100)
Net appreciation	280	—	280
Reclassifications	—	(277)	(277)
Appropriation for expenditure	(240)	(40)	(280)
Endowment net assets at June 30	<u>\$ 2,962</u>	<u>3,437</u>	<u>6,399</u>

(continues »)

Notes to Consolidated Financial Statements

The Leukemia & Lymphoma Society, Inc. / June 30, 2017 (Amounts in thousands)

5) Contribution and Other Receivables

LLS's contribution and other receivables at June 30, 2017 and 2016 consist of unconditional promises to give, receivables associated with service revenue, and legacies for which the underlying wills have been declared valid by the probate court and no other conditions are required to be met. Contributions and other receivables consist of the following:

	<u>2017</u>	<u>2016</u>
Campaign contributions	\$ 2,749	4,248
Co-Pay contributions	6,000	6,450
Other restricted contributions	8,080	6,546
Service revenue and other	<u>956</u>	<u>—</u>
Total	<u>\$ 17,785</u>	<u>17,244</u>

Contributions receivables are originally recorded based on discounted cash flows using a risk adjusted discount rate. Amounts are scheduled to be received as follows:

	<u>2017</u>	<u>2016</u>
Less than one year	\$ 13,688	10,723
1 to 5 years	5,186	7,272
After 5 years	<u>25</u>	<u>50</u>
Subtotal	18,899	18,045
Less:		
Allowance for uncollectible accounts	(357)	(169)
Discount to present value (1.5% to 5.0%)	<u>(757)</u>	<u>(632)</u>
Total	<u>\$ 17,785</u>	<u>17,244</u>

As of June 30, 2017 and 2016, 53% and 65% of gross legacies and contributions receivable were from two funding sources.

(continues »)

Notes to Consolidated Financial Statements

The Leukemia & Lymphoma Society, Inc. / June 30, 2017 (Amounts in thousands)

6) Deferred Revenue

The majority of deferred revenue includes amounts received for special events that will be held subsequent to the fiscal year end. Deferred revenue as of June 30, 2017 and 2016 consists of the following:

	<u>2017</u>	<u>2016</u>
Grants	\$ 45	1,145
Service revenue	2,100	—
Special events	<u>11,883</u>	<u>11,771</u>
Total	<u>\$ 14,028</u>	<u>12,916</u>

7) Donated Goods, Services and Media

The value of donated goods, donated services for family support group facilitators and research grant reviewers, as well as donated media are included in both revenue and expense as shown below:

	<u>2017</u>	<u>2016</u>
Donated goods	\$ 3,552	—
Donated services	2,430	2,867
Donated media	<u>8,612</u>	<u>8,308</u>
Total	<u>\$ 14,594</u>	<u>11,175</u>

8) Fixed Assets, Net

Fixed assets at June 30, 2017 and 2016 consist of the following (in thousands):

	<u>2017</u>	<u>2016</u>
Leasehold improvements	\$ 1,795	1,434
Furniture, fixtures, and other office equipment	3,547	3,397
Computer equipment and software	<u>36,350</u>	<u>39,706</u>
Total	41,692	44,537
Less accumulated depreciation and amortization	<u>(31,573)</u>	<u>(27,591)</u>
Fixed assets, net	<u>\$ 10,119</u>	<u>16,946</u>

In 2017, an impairment of fixed assets of \$5,434 was recorded for the write-off a fund-raising platform that will no longer be utilized by LLS.

(continues »)

Notes to Consolidated Financial Statements

The Leukemia & Lymphoma Society, Inc. / June 30, 2017 (Amounts in thousands)

9) Retirement Plans

LLS has a defined contribution 403(b) plan covering all employees meeting age and service requirements. LLS contributions are based on a percentage of each eligible employee's salary and years of service. Expenses under this plan aggregated \$2,149 and \$1,827 for the years ended June 30, 2017 and 2016, respectively.

LLS has nonqualified deferred compensation plans for its executive staff subject to the provisions of the Internal Revenue Code Section 457 (the 457 Plans). There were no expenses incurred for the years ended June 30, 2017 and 2016. The assets of the 457 Plans are included in investments in the accompanying consolidated balance sheet and amounted to approximately \$1,574 and \$1,405 at June 30, 2017 and 2016, respectively. The liabilities of the 457 Plans are included in other long-term liabilities in the accompanying consolidated balance sheet and amounted to approximately \$1,574 and \$1,374 at June 30, 2017 and 2016, respectively.

10) Lease Commitments

The leases for premises, which LLS's National Office and chapters occupy, expire on various dates through March 31, 2031, and provide for certain payments subject to escalation and periodic rate increases relating to real estate taxes, operating expenses, and utilities.

The approximate minimum aggregate future annual rental commitments are summarized as follows:

Year ending June 30:

2018	\$	7,106
2019		6,134
2020		5,636
2021		5,243
2022		4,477
Thereafter		<u>13,923</u>
Total	\$	<u><u>42,519</u></u>

11) Joint Costs Allocation

For the years ended June 30, 2017 and 2016, LLS incurred expenses to conduct activities that had both fundraising appeals as well as mission program and management and general components (joint activities). Those joint activities included direct mail, coinboards, and media campaigns. Such costs are allocated based on applicable accounting standards and were allocated as follows:

		<u>2017</u>	<u>2016</u>
Fund raising	\$	12,832	13,901
Patient and community service		2,666	2,076
Public health education		<u>5,002</u>	<u>5,117</u>
Total	\$	<u><u>20,500</u></u>	<u><u>21,094</u></u>

Acknowledgments

2017 ANNUAL REPORT

Research Grants

Specialized Center of Research

The Specialized Center of Research Program funds multidisciplinary research by teams of leading-edge academic investigators that hastens the discovery and development of better treatments for leukemia, lymphoma and myeloma patients. A center is comprised of at least three independent research programs that are integrated and supported by scientific core laboratories.

William Carroll, MD, 2014
New York University School of Medicine

Dr. William Carroll is funded in part by Thomas Moore.

Irene Ghobrial, MD, 2014
Dana-Farber Cancer Institute

Helen Heslop, MD, 2014
Baylor College of Medicine

Carl June, MD, 2013
University of Pennsylvania Health System

Dr. Carl June is funded in part by the Cora and John H. Davis Foundation, the Topeka Community Foundation - Advisors Excel Team and an anonymous donor.

Thomas Kipps, MD, PhD, 2014
University of California, San Diego

Tak Mak, PhD, 2017
University Health Network

Ari Melnick, MD, 2016
Weill Cornell Medical College

Stephen Nimer, MD, 2018*
University of Miami

Robert Orlowski, MD, PhD, 2018*
The University of Texas MD Anderson Cancer Center

Andreas Strasser, MSc, FAA, PhD, 2018*

Walter & Eliza Hall Institute of Medical Research

David Weinstock, MD, 2016
Dana-Farber Cancer Institute

Anas Younes, MD, 2017
Memorial Sloan Kettering Cancer Center

Dr. Anas Younes is funded in part by Patrick Allender, C.E. and Jean Andrews, Dr. Evelyn Bata, Beltway Cleaning Services, Valorie and Melvin Booth, Cynthia and Joe Bruno, Danielle D'Aiello, Danaher Corporation, The Irwin and Ginny Edlavitch Foundation, LIUNA Charitable Foundation, AI and Suzanne Lord, the J. Willard and Alice S. Marriott Foundation, Cynthia and Daniel Johnson, Caren and Phillip Merrick, Nancy and Patrick Minan, Beverly and Stephen Movius, Wendy and Mike O'Neil, Jim and Gail Palmer, Kathleen and Edward Quinn, the Starfish Foundation, Virginia Sheldon Jerome Foundation, and The William J. Shaw Family Foundation.

The following SCOR grant funding ended during FY17 and was funded, in part or full, by a donor:

- *Dr. John Byrd was funded in part by Rita Cavanaugh and Gerald Kafka.*
- *Dr. Jonathan Licht was funded in part by the Kathryn Dent and John L. Tillman Charitable Fund.*

Career Development Program (Scholars and Clinical Scholars)

The Career Development Program provides stipends to investigators of exceptional promise in the early stages of their careers, helping them devote their careers to research in leukemia, lymphoma or myeloma.

Omar Abdel-Wahab, MD, 2017
Memorial Sloan Kettering Cancer Center

Saro Armenian, DO, MPH, 2017
Beckman Research Institute of City of Hope

Uttiya Basu, PhD, 2016
Columbia University Medical Center

Julie Blander, PhD, 2015
Weill Cornell Medical College

Robert Bradley, MD, 2018*
Fred Hutchinson Cancer Research Center

Jan Burger, MD, PhD, 2014
The University of Texas MD Anderson Cancer Center

Dr. Jan Burger is funded in part by David Weinstein.

Fernando Camargo, PhD, 2016
Boston Children's Hospital

Jianjun Chen, PhD, 2018*
University of Cincinnati

Dr. Jianjun Chen is fully funded by The Marge & Charles Schott Foundation.

Jerry Chipuk, PhD, 2017
Icahn School of Medicine at Mount Sinai

Dipanjan Chowdhury, PhD, 2015
Dana-Farber Cancer Institute

Tomasz Cierpicki, PhD, 2017
University of Michigan

Dr. Tomasz Cierpicki is fully funded by The Jake Wetchler Foundation.

Takeshi Egawa, MD, PhD, 2018*
Washington University School of Medicine in St. Louis

Thomas Fazio, PhD, 2015
University of Massachusetts Medical School

Benjamin Garcia, PhD, 2016
Perelman School of Medicine at the University of Pennsylvania

Ramiro Garzon, MD, 2016
The Ohio State University

Irene Ghobrial, MD, 2017
Dana-Farber Cancer Institute

Jolanta Grembecka, PhD, 2014
University of Michigan

David Guertin, PhD, 2016
University of Massachusetts Medical School

Katharine Hsu, MD, PhD, 2017
Memorial Sloan Kettering Cancer Center

Morgan Huse, PhD, 2015
Memorial Sloan Kettering Cancer Center

Peng Ji, MD, PhD, 2018*
Northwestern University

Amy Johnson, PhD, 2018*
The Ohio State University

Michael Kharas, PhD, 2018*
Memorial Sloan Kettering Cancer Center

John Koreth, MD, PhD, 2014
Dana-Farber Cancer Institute

Ming Li, PhD, 2015
Memorial Sloan Kettering Cancer Center

Ivan Maillard, MD, PhD, 2014
University of Michigan

Ravindra Majeti, MD, PhD, 2016
Leland Stanford Junior University

Constantine Mitsiades, MD, PhD, 2017
Dana-Farber Cancer Institute

Golam Mohi, PhD, 2014
SUNY Upstate Medical University

Ann Mullally, MD, 2018*
Brigham and Women's Hospital

Trista North, PhD, 2017
Beth Israel Deaconess Medical Center

Ryan O'Connell, PhD, 2018*
University of Utah

Ryoma Ohi, PhD, 2014
Vanderbilt University Medical Center

Sophie Paczesny, MD, PhD, 2015
Indiana University

*Newly awarded or renewed grants in Fiscal Year 2018

Christopher Park, MD, PhD, 2018*
New York University School of
Medicine

Talya Salz, PhD, 2014
Memorial Sloan Kettering Cancer
Center

Joseph Scandura, MD, PhD, 2014
Weill Cornell Medical College

Xiaobing Shi, PhD, 2017
The University of Texas MD
Anderson Cancer Center

Daniel Starczynowski, PhD, 2016
Cincinnati Children's Hospital
Medical Center

Kimberly Stegmaier, MD, 2014
Dana-Farber Cancer Institute

Ulrich Steidl, MD, PhD, 2015
Albert Einstein College of Medicine

Enrico Tiacchi, MD, 2014
University of Perugia

Raoul Tibes, MD, PhD, 2015
Mayo Clinic, Arizona

Wei Tong, PhD, 2014
Children's Hospital of Philadelphia

*Dr. Tong was funded in part by The
VWR Foundation.*

Saad Usmani, MD, 2018*
Charlotte Mecklenburg Hospital
Authority (Carolinas HealthCare
System)

*Dr. Saad Usmani is funded in
part by the Carolinas Healthcare
Foundation.*

Geoffrey Uy, MD, 2018*
Washington University in St. Louis

Christopher Vakoc, MD, PhD, 2016
Cold Spring Harbor Laboratory

Loren Walensky, MD, PhD, 2015
Dana-Farber Cancer Institute

Matthew Walter, MD, 2014
Washington University School of
Medicine in St. Louis

Roland Walter, MD, PhD, MS, 2015
Fred Hutchinson Cancer Research
Center

*Dr. Roland Walter is fully funded by
Dr. Dhaval Dhru.*

Wenyi Wei, PhD, 2014
Beth Israel Deaconess Medical
Center

David Weinstock, MD, 2014
Dana-Farber Cancer Institute

Hans-Guido Wendel, MD, 2015
Memorial Sloan Kettering Cancer
Center

*Dr. Hans-Guido Wendel is funded in
part by Susan Reid.*

Johnathan Whetstine, PhD, 2015
Massachusetts General Hospital

Catherine Wu, MD, 2015
Dana-Farber Cancer Institute

Xiaochun Yu, MD, PhD, 2015
Beckman Research Institute of
City of Hope

Shan Zha, MD, PhD, 2014
Columbia University Medical Center

Chengcheng Zhang, PhD, 2014
The University of Texas
Southwestern Medical Center

Jing Zhang, PhD, 2014
University of Wisconsin

Xiaolan Zhao, PhD, 2014
Memorial Sloan Kettering Cancer
Center

Career Development Program (Special Fellows, Clinical Special Fellows and Fellows)

Shruti Bhatt, PhD, 2017
Dana-Farber Cancer Institute

George Burslem, MS, PhD, 2018*
Yale University

Sheng F. Cai, MD, PhD, 2017
Memorial Sloan Kettering Cancer
Center

Hye Ji Cha, PhD, 2017
Boston Children's Hospital

Huan Chen, PhD, 2017
Boston Children's Hospital

Ryan Corces, PhD, 2018*
Leland Stanford Junior University

Ahmet Coskun, PhD, 2016
Leland Stanford Junior University

Madzia Crossley, PhD, 2017
Leland Stanford Junior University

Ana Carolina da Silva Almeida, PhD,
2017
Columbia University Medical Center

Sarah Deng, PhD, 2017
New York University Medical Center

Dan Dominissini, PhD, 2016
The University of Chicago

Shannon Elf, PhD, 2018*
Brigham and Women's Hospital

Jonathan Esensten, MD, PhD, 2017
University of California, San
Francisco

*Dr. Jonathan Esensten is funded in
part by an anonymous donor.*

Craig Forester, MD, PhD, 2016
University of California, San
Francisco

Jennifer Grants, PhD, 2018*
British Columbia Cancer Agency

Bingqian Guo, PhD, 2018*
Harvard Medical School

Sarah Hainer, PhD, 2017
University of Massachusetts Medical
School

Lulu Hu, PhD, 2018*
The University of Chicago

Daichi Inoue, MD, PhD, 2018*
Memorial Sloan Kettering Cancer
Center

Andrew Intlekofer, MD, PhD, 2016
Memorial Sloan Kettering Cancer
Center

Neeraj Joshi, MSc, PhD, 2016
University of California, San
Francisco

Yoon-A Kang, PhD, 2018*
Columbia University Medical Center

Richard Jason Lamontagne, PhD,
2018*
The Wistar Institute

Fides Lay, PhD, 2017
University of California, Los Angeles

I-Ju Lee, PhD, 2016
Dana-Farber Cancer Institute

Stanley Lee, PhD, 2017
Memorial Sloan Kettering Cancer
Center

*Dr. Stanley Lee is funded in part by
an anonymous donor.*

Qiming Liang, PhD, 2016
Shanghai Institute of Immunology

Ruiting Lin, PhD, 2018*
Emory University

Priya Mathur, PhD, 2018*
The University of Chicago

Lucia Morgado Palacin, PhD, 2018*
Columbia University Medical Center

Vera Mugoni, PhD, 2016
Beth Israel Deaconess Medical
Center

Shannon Oda, PhD, 2018*
Fred Hutchinson Cancer Research
Center

*Dr. Shannon Oda is fully funded by
Dr. Dhaval Dhru.*

Tamara Ouspenskaia, PhD, 2018*
Broad Institute

Jelena Petrovic, PhD, 2017
University of Pennsylvania Health
System

Lars Plate, PhD, 2016
The Scripps Research Institute

Russell Ryan, MD, 2017
Massachusetts General Hospital

Prabha Sarangi, PhD, 2016
Dana-Farber Cancer Institute

Anne Schuetz, PhD, 2017
University of Toronto

Ashima Shukla, PhD, 2018*
Sanford Burnham Prebys Medical
Discovery Institute

Vipul Shukla, PhD, 2018*
La Jolla Institute for Allergy and
Immunology

Eric Smith, MD, PhD, 2018*
Memorial Sloan Kettering Cancer
Center

Srividya Swaminathan, PhD, 2017
Leland Stanford Junior University

*Dr. Srividya Swaminathan is funded
in part by an anonymous donor.*

Elisa ten Hacken, PhD, 2018*
Dana-Farber Cancer Institute

Rachel Thijssen, PhD, 2018*
Walter & Eliza Hall Institute of
Medical Research

Zuzana Tothova, MD, PhD, 2016
Dana-Farber Cancer Institute

Peter van Galen, PhD, 2017
Massachusetts General Hospital

Leandro Venturutti, PhD, 2018*
Weill Cornell Medical College

Matthew Witkowski, PhD, 2018*
New York University School of
Medicine

Bas Wouters, MD, PhD, 2016
Erasmus University Rotterdam

Selwin Wu, PhD, 2017
Dana-Farber Cancer Institute

*Newly awarded or renewed grants in Fiscal Year 2018

Heping Xu, PhD, 2016
Cincinnati Children's Research
Foundation

Dongqing Yan, PhD, 2018*
The University of Utah

Chao Yang, PhD, 2016
The Johns Hopkins University
School of Medicine

Noemi Zambetti, PhD, 2018*
University of California, San
Francisco

Yu Zhang, PhD, 2018*
Boston Children's Hospital

Hufeng Zhou, PhD, 2016
Brigham and Women's Hospital

Jiajun Zhu, PhD, 2018*
Memorial Sloan Kettering Cancer
Center

*The following CDP grant funding
ended during FY17 and was funded,
in part or full, by a donor:*

- *Dr. Christopher Cogle was funded
in part by the Kathryn Dent and
John L. Tillman Charitable Fund.*
- *Dr. Irene Ghobrial was funded
in part by the Kathryn Dent and
John L. Tillman Charitable Fund.*
- *Dr. Saad Usmani was funded in
part by the Carolinas Healthcare
Foundation.*

Translational Research Program

*The Translational Research
Program supports outstanding
investigators deemed by our expert
advisors most likely to translate
basic biomedical discoveries into
new, safe and effective treatments,
ultimately prolonging and enhanc-
ing patients' lives.*

Ricardo Aguiar, MD, PhD, 2017
The University of Texas Health
Science Center at San Antonio

Iannis Aifantis, PhD, 2016, 2017
New York University School of
Medicine

Carl Allen, MD, 2018*
Baylor College of Medicine

Stephen Ansell, MD, PhD, 2018*
Mayo Clinic, Rochester

*Dr. Stephen Ansell is fully funded by
an anonymous donor.*

Caroline Arber, MD, 2016
Baylor College of Medicine

Fotis Asimakopoulos, MB BChir, PhD,
2018*
University of Wisconsin

Jon Aster, MD, PhD, 2018*
Brigham and Women's Hospital

Francesco Bertoni, MD, 2017
Fondazione per la Ricerca e la Cura
dei Linfomi nel Ticino

Ranjit Bindra, MD, PhD, 2018*
Yale University

Bruce Blazar, MD, 2018*
University of Minnesota Twin Cities

Marie Bleakley, MD, PhD, 2017
Fred Hutchinson Cancer Research
Center

Mario Boccardo, MD, 2016
Università degli Studi di Torino

Giulia Casorati, PhD, 2016
Fondazione Centro San Raffaele

Leandro Cerchietti, MD, 2016
Weill Cornell Medical College

Li Chai, MD, 2016
Brigham and Women's Hospital

George Daley, MD, PhD, 2018*
Boston Children's Hospital

Alexey Danilov, MD, PhD, 2018*
Oregon Health & Science University

Hema Dave, MD, MPH, 2018*
Children's Research Institute

Sandeep Dave, MD, MS, 2016
Duke University Medical Center

Kara Davis, DO, 2018*
Leland Stanford Junior University

Randall Davis, MD, 2017
The University of Alabama at
Birmingham

Madhav Dhodapkar, MBBS, 2017
Yale University

Benjamin Ebert, MD, PhD, 2018*
Dana-Farber Cancer Institute

Todd Fehniger, MD, PhD, 2017
Washington University School of
Medicine in St. Louis

Adolfo Ferrando, MD, PhD, 2018*
Columbia University Medical Center

*Dr. Adolfo Ferrando is funded in part
by The Higgins Foundation.*

Andrés Ferreri, MD, 2017
Fondazione Centro San Raffaele

Mark Frattini, MD, PhD, 2015
Columbia University Medical Center

*Dr. Mark Frattini is funded in part by
The Stephen Birnbaum Foundation.*

Karin Gaensler, MD, 2018*
University of California, San
Francisco

Jacqueline Garcia, MD, 2018*
Dana-Farber Cancer Institute

Lucy Godley, MD, PhD, 2017
The University of Chicago

Stephen Gottschalk, MD, 2016
Baylor College of Medicine

Douglas Graham, MD, PhD, 2016
Emory University

*Dr. Douglas Graham is funded in
part by the Melody Cronin Fund.*

Steven Grant, MD, 2015
Virginia Commonwealth University

*Dr. Steven Grant is funded in part by
the Breeden-Adams Foundation.*

Jolanta Grembecka, PhD, 2016
University of Michigan

Edwin Hawkins, PhD, 2018*
Walter & Eliza Hall Institute of
Medical Research

Timothy Hughes, MD, FRACP,
FRCPA, MBBS, 2017
South Australian Health & Medical
Research Institute

Emmanuel Katsanis, MD, 2017
The University of Arizona

Michael Kharas, PhD, 2017
Memorial Sloan Kettering Cancer
Center

Yong-Mi Kim, MD, PhD, MPH, 2017
Children's Hospital Los Angeles

Angela Koehler, PhD, 2018*
Massachusetts Institute of
Technology

Marina Konopleva, MD, PhD, 2016
The University of Texas
MD Anderson Cancer Center

Larry Kwak, MD, PhD, 2018*
Beckman Research Institute of City
of Hope

Dan Landau, MD, PhD, 2017
Weill Cornell Medical College

Ronald Levy, MD, 2018*
Leland Stanford Junior University

Timothy Ley, MD, 2018*
Washington University School of
Medicine in St. Louis

William Matsui, MD, 2016
The Johns Hopkins University
School of Medicine

*Dr. William Matsui is funded in part
by The Charles T. Bauer Charitable
Foundation.*

Constantine Mitsiades, MD, PhD,
2018*

Dana-Farber Cancer Institute

Charles Mullighan, MD, MBBS, 2017
St. Jude Children's Research
Hospital

Nikhil Munshi, MD, 2016
Dana-Farber Cancer Institute

Stephen Nimer, MD, 2018*
University of Miami

Teresa Palomero, PhD, 2017
Columbia University Medical Center

Jae Park, MD, 2018*
Memorial Sloan Kettering Cancer
Center

Jun Qi, PhD, 2018*
Dana-Farber Cancer Institute

Noopur Raje, MD, 2017
Massachusetts General Hospital

*Dr. Noopur Raje is funded in part by
an anonymous donor.*

Feyruz Rassool, PhD, 2016
University of Maryland at Baltimore

Katy Rezvani, MD, PhD, 2018*
The University of Texas
MD Anderson Cancer Center

Alain Rook, MD, 2016
University of Pennsylvania Health
System

Deepa Sampath, MD, 2018*
The Ohio State University

Ralph Sanderson, PhD, 2017
The University of Alabama at
Birmingham

Stefanie Sarantopoulos, MD, PhD,
2016
Duke University Medical Center

*Newly awarded or renewed grants in Fiscal Year 2018

Guy Sauvageau, MD, PhD, FRCPC, 2017

Institut de Recherche en Immunovirologie et en Cancerologie

Guy Sauvageau, MD, PhD, FRCPC, 2018*

Institut de Recherche en Immunovirologie et en Cancerologie

Barbara Savoldo, MD, PhD, 2018*
The University of North Carolina at Chapel Hill

David Scadden, MD, 2017
Massachusetts General Hospital

Lev Silberstein, MD, PhD, 2018*
Massachusetts General Hospital

Daniel Starczynowski, PhD, 2017
Cincinnati Children's Research Foundation

Ulrich Steidl, MD, PhD, 2017
Albert Einstein College of Medicine

Kris Thielemans, MD, PhD, 2016
Vrije Universiteit Brussel

Enrico Tiacchi, MD, 2018*
University of Perugia

John Timmerman, MD, 2014
University of California, Los Angeles

Dr. John Timmerman is funded in part by Luppe and Paula Luppen Family Foundation.

Wei Tong, PhD, 2018*
Children's Hospital of Philadelphia

Amit Verma, MBBS, 2016
Albert Einstein College of Medicine

David Wald, MD, PhD, 2016
Case Western Reserve University School of Medicine

Roland Walter, MD, PhD, MS, 2016
Fred Hutchinson Cancer Research Center

Y. Lynn Wang, MD, PhD, 2017
The University of Chicago

Dr. Y. Lynn Wang is funded in part by Imagine a Cure for Leukemia.

George Weiner, MD, 2017
The University of Iowa

Amittha Wickrema, MD, PhD, 2017
The University of Chicago

Jianhua Yu, PhD, 2017
The Ohio State University

Dr. Jianhua Yu is funded in part by Niles Hushka, Jerome Solove, and an anonymous donor.

Andrew Zannettino, PhD, 2018*
The University of Adelaide

Fenghuang Zhan, MD, PhD, 2018*
The University of Iowa

Translational Research Program: Renewal

John Byrd, MD, 2015
The Ohio State University

Maria Figueroa, MD, 2017
University of Miami

Steven Grant, MD, 2018*
Virginia Commonwealth University

Ronald Hoffman, MD, 2017
Icahn School of Medicine at Mount Sinai

James Rubenstein, MD, PhD, 2017
University of California, San Francisco

Dr. James Rubenstein is funded in part by Leon Borchers and Lisa Scheer & Ed Cone

Steven Treon, MD, PhD, 2018*
Dana-Farber Cancer Institute

Li Zhang, MSc, MD, PhD, 2018*
University Health Network

The following TRP grant funding ended during FY17 and was funded, in part or full, by a donor.

- *Dr. Richard Jones was funded in part by The Charles T. Bauer Charitable Foundation.*
- *Dr. Javier Pinilla was funded in part by Dorothy Fields.*
- *Dr. Roland Walter was fully funded by Dr. Dhaval Dhru (included in CDP section)*

MPN Challenge Grants

This program is run in partnership with the MPN Research Foundation.

Angela Fleischman, MD, PhD, 2018*
University of California, Irvine

James Griffin, MD, 2018*
Dana-Farber Cancer Institute

Vivian Oehler, MD, 2018*
Fred Hutchinson Cancer Research Center

Stephen Oh, MD, PhD, 2018*
Washington University in St. Louis

Rebekka Schneider, MD, PhD, 2018*
RWTH Aachen University

IWMF Grants

This program is run in partnership with the International Waldenström's Macroglobulinemia Foundation (IWMF).

Shahrazad Jalali, PhD, 2018*
Mayo Clinic

Larry Kwak, MD, PhD, 2018*
Beckman Research Institute of City of Hope

Sherie Morrison, PhD, 2018*
David Geffen School of Medicine at University of California, Los Angeles

Bruno Paiva, PhD & Jose Angel Martinez Climint, MD, 2018*
University of Navarra

Marzia Varettoni, MD, 2018*
Fondazione Italiana Linfomi Onlus

Special Initiatives

Ari Melnick, MD, 2015
Weill Cornell Medical College

Dr. Ari Melnick is funded in part by the Paul E. Singer Foundation Innovation Grant in DLBCL.

Markus Muschen, MD, PhD, 2017
Beckman Research Institute of City of Hope

Dr. Markus Muschen is funded in part by the Dr. Ralph and Marian Falk Medical Research Trust.

Transforming CURES Initiative

John Crispino, PhD, 2016
Northwestern University

Reuben Kapur, PhD, 2016
Indiana University – Purdue University Indianapolis

Phillip Koeffler, MD, 2016
Cedars-Sinai Medical Center

Akiko Shimamura, MD, PhD, 2016
Boston Children's Hospital

Screen to Lead Program

Adolfo Ferrando, MD, PhD, 2018*
Columbia University Medical Center

Gary Reuther, PhD, 2018*
H. Lee Moffitt Cancer Center & Research Institute

Rising Tide Foundation for Clinical Cancer Research/LLS Patient-Focused Immunotherapy Initiative

David Gottlieb, MD, 2017
The University of Sydney

Ann Leen, PhD, 2017
Baylor College of Medicine

Ronald Levy, MD, 2017
Leland Stanford Junior University

Margaret Shipp, MD, 2017
Dana-Farber Cancer Institute

New Idea Award

A concept award that funds innovative approaches that may fundamentally change the understanding, diagnosis and/or treatment of blood cancers and related premalignant conditions.

- *Dr. Craig Crews' funding ended during FY17 but he was funded in part by Dr. Nadia Christensen.*

*Newly awarded or renewed grants in Fiscal Year 2018

Partnerships

Therapy Acceleration Program Partnerships

Acetylon Pharmaceuticals, Inc
Boston, MA

Affimed Therapeutics AG
Heidelberg, Germany

BioTheryX, Inc.
Chappaqua, NY

Ivan Borrello, MD
Johns Hopkins University
Sidney Kimmel Comprehensive
Cancer Center

Celator Pharmaceuticals, Inc
Princeton, NJ

Constellation Pharmaceuticals, Inc
Cambridge, MA

Giulio Draetta, MD, PhD
The University of Texas MD
Anderson Cancer Center

Brian Druker, MD
Oregon Health & Science University

Forty Seven, Inc.
Menlo Park, CA

Irene Ghobrial, MD
Dana-Farber Cancer Institute

ImmunGene, Inc.
Camarillo, CA

Anand Jillella, MD
Emory University

Kiadis Pharma NV*
Amsterdam, Netherlands

Kite Pharma, Inc.
Santa Monica, CA

Ronald Levy, MD
The Board of Trustees of the Leland
Stanford Junior University

OncoPep, Inc.
North Andover, MA

Daniel Pollyea, MD
University of Colorado

Stemline Therapeutics, Inc.
New York, NY

Advisors

Medical & Scientific Affairs Committee

Steve Rosen, MD, FACP *
Beckman Research Institute of
City of Hope
Chair

Stephen Ansell, MD, PhD
Mayo Clinic, Rochester

Leif Bergsagel, MD
Mayo Clinic, Arizona

Ravi Bhatia, MD
The University of Alabama at
Birmingham

Renzo Canetta, MD*
former BMS

Alan D'Andrea, MD
Dana-Farber Cancer Institute

Giulio Draetta, MD, PhD
The University of Texas MD
Anderson Cancer Center

Philip Frost, MD, PhD
former Imclone, Wyeth

Irene Ghobrial, MD
Dana-Farber Cancer Institute

Catriona Jamieson, MD, PhD
University of California, San Diego

Larry Kwak, MD, PhD
Beckman Research Institute of
City of Hope

Michelle LeBeau, PhD
The University of Chicago

Ross Levine, MD
Memorial Sloan Kettering Cancer
Center

Jonathan Licht, MD
University of Florida

Alan List, MD
H. Lee Moffitt Cancer Center &
Research Institute

Susan O'Brien, MD
University of California, Irvine

Franklin O. Smith, III, MD*
MedPace

Therapy Acceleration Program Advisors

Dana Callow, MBA
Boston Millennia Partners
Chair

Adam Craig, MBBS, PhD
Medarc Consulting

C. Casey Cunningham, MD
Santé Ventures

William Dalton, MD, PhD
M2Gen

Giulio Draetta, MD, PhD
The University of Texas MD
Anderson Cancer Center

Ross Levine, MD
Memorial Sloan Kettering Cancer
Center

Ronald Levy, MD
The Board of Trustees of the Leland
Stanford Junior University

Vern Norviel, JD
Wilson Sonsini Goodrich & Rosati

Susan M. O'Brien, MD
The University of California, Irvine

* Equity investment of \$750,000 in Fiscal Year 2017.

2017 National Recognition & Awards Program

We are pleased to recognize the extraordinary involvement of individuals, companies, corporations and organizations in their support of LLS and its mission. Those honored give of their time, talent and have made a significant difference in the lives of so many. To find out more about our awards program, please go to <http://www.lls.org/national-awards-nomination>

Congratulations to all the 2017 awardees!

2017 National Recognition & Awards Recipients

President's Award

Recognizes a volunteer whose personal commitment and dedication inspires and motivates others to support our mission.

Gary Thompson
South Central Texas Chapter

Spiral of Life Award

Individual who contributes personal and professional talents to advance an LLS national campaign or program.

John Kellenyi
(awarded posthumously)
New Jersey Chapter

Vision for Life Award

Individual, corporation, or organization who, by thinking outside of the box, helped to create a new national campaign or program.

Rob Braley
Mississippi & Louisiana Chapter
Gary Jobson
Maryland Chapter
Frank N. Moore, MD, CellCycle
Rocky Mountain Chapter

Dr. John J. Kenny Award

Member of medical community, a social worker, or a caregiver who supports patient services.

Matthew J. Matasar, MD
Long Island Chapter
Jeffrey V. Matous, MD
Rocky Mountain Chapter
Kim Schuetz
Wisconsin Chapter
Marin Xavier, MD
San Diego & Hawaii Chapter

Dr. Kenneth B. McCredie Award

Individual or corporation who has supported LLS for at least 5 years and helped raise more than \$1 million.

Ray Authement, PhD
Mississippi & Louisiana Chapter
Imagine A Cure for Leukemia
LLS Canada
Lynne O'Brien
National Capital Area Chapter
PFG/Vistar
Rocky Mountain Chapter

Terumo BCT
Rocky Mountain Chapter

The van Wieringen Family
Wisconsin Chapter

Partners Against Blood Cancer Award

Ruby (40+ years)
Sigma Alpha Epsilon – Georgia Beta
Georgia Chapter

Platinum (20+ years)
Melissa Abdouch
Minnesota Chapter

Wayzata Central Middle School
Minnesota Chapter

Wheel & Sprocket
Wisconsin Chapter

Gold (15+ years)
680 The Fan
Georgia Chapter

Silver (10+ years)
Cardinal Solutions Group
Tri-State Southern Ohio Chapter

Hoxworth Blood Center
Tri-State Southern Ohio Chapter

The Jewish Hospital - Mercy Health
Tri-State Southern Ohio Chapter

Norton Healthcare
Kentucky & Southern Indiana
Chapter

Runners For Life
Texas Gulf Coast Chapter

Michael Schuster
Tri-State Southern Ohio Chapter

Judge Matt Sebesta
Texas Gulf Coast Chapter

The Whitney Foundation
Central California Chapter

Bronze (5+ years)
Galen College of Nursing
Kentucky & Southern Indiana
Chapter

Generac Power Systems, Inc
Wisconsin Chapter

Left Hand Brewing Company
Rocky Mountain Chapter

Lehigh Valley Restaurant Group, Inc./
Red Robin
Eastern Pennsylvania Chapter

San Diego Gas & Electric
San Diego & Hawaii Chapter

Sessions, Fishman, Nathan & Israel,
LLC
Mississippi & Louisiana Chapter

Max Surikov
Tri-State Southern Ohio Chapter

UK Markey Cancer Center
Kentucky & Southern Indiana
Chapter

Chairman's Awards

Chairman's Advocacy Citation

Pennsylvania State Representative
Matt Baker - Chairman, Pennsylvania
House of Representatives Health
Committee Central Pennsylvania
Chapter

Chairman's Leadership Citation

Wayne Berson
National Capital Area Chapter

Tam Driscoll
Oregon SW Washington Idaho
Montana Chapter

James P. Joseph
Long Island Chapter

Tony Lubrano
Long Island Chapter

Jason Ryan
Texas Gulf Coast Chapter

Don Ed Wright
South Central Texas Chapter

Special Recognition Citation

Guy Brierre
Mississippi & Louisiana Chapter

Lisa Cooper
Greater Bay Area Chapter

Robert Covay
Greater Bay Area Chapter

Matt Eicheidinger
Minnesota Chapter

Chris Flores - League Champion
South Central Texas Chapter

Douglas Grimmatt
Long Island Chapter

Chris Kegel
Wisconsin Chapter

John King
Kentucky & Southern Indiana Chapter

The LIUNA Charitable Foundation
National Capital Area Chapter

Rachel Peniche
San Diego & Hawaii Chapter

Bill Rawlings
Georgia Chapter

Chris Wilson
Central California Chapter

Richard T. Wright
Western & Central New York Chapter

Casey Zylla
Minnesota Chapter

2017 Media Awards Recipients

Recipients have a record of excellence in promotional support & fundraising, as well as educating and informing the public of the LLS organization and its mission.

Digital

CARAT
New York, NY

Jim McKinnis
The Integer Group
Dallas, TX

Rene Michel
MVP Video Productions
Mandeville, Louisiana

Kevin Mumphrey
MVP Video Productions
Mandeville, LA

NARS
New York, NY

Print

Biz New Orleans
Metairie, LA

Pam Deller
Lehigh Valley Style
Palmer Township, PA

Fort Worth Business Press
Fort Worth, TX

Lehigh Valley Style
Palmer Township, PA

Pat Selcer
Lamar Advertising Company
Tulsa, OK

Tyler Media Group
Oklahoma City, OK

Lamar Advertising Company
Guaynabo, Puerto Rico

Radio

Cox Media Group
K99.1, WHKO-FM
Dayton, OH

Anna de Haro
iHeartMedia, Inc.
Dallas, TX

Josh Delozier
TheSpy - KOSU-FM
Oklahoma City, OK

iHeartMedia, Inc.
Dallas, TX

iHeartMedia, Inc.
Tampa, FL

iHeartMedia, Inc.
100.3 FM - WHTZ
New York, NY

Skeery Jones
Z100 Elvis Duran & the Morning Show

iHeartMedia, Inc.
New York, NY

KRMG
Tulsa, OK

myTalk 107.1
KTMV-FM
St. Paul, MN

Sam Nein
iHeartMedia, Inc.
Tampa, FL

Andie Summers
92.5 XTU
Philadelphia, PA

TheSpy - KOSU-FM
Oklahoma City, OK

Alexis Thompson
myTalk 107.1
KTMV-FM
St. Paul, MN

Nancy Wilson
Cox Media Group
K99.1, WHKO-FM
Dayton, OH

92.5 XTU
WXTU-FM
Philadelphia, PA

Television

ABC 8News - WRIC-TV
Richmond, VA

Barclay Bishop
WJBF NewsChannel 6
Augusta, GA

Leslie Bohl
WOAI-TV
News 4 San Antonio Today
San Antonio, TX

Eric Braate
KPRC 2
Houston, TX

Drew Carney
KGW-TV, NewsChannel 8
Portland, OR

CBS6 - WTVR-TV
Richmond, VA

Doug Dunbar
KTVT-TV, CBS 11 News
Fort Worth, TX

Fire on the Bayou
New Orleans, LA

FOX23 News - KOKI-TV
Tulsa, OK

Laura French
CBS6 - WTVR-TV
Richmond, VA

Good Day Street Talk
Fox 5 NY
New York, NY

Karen Grace
KENS 5 Eyewitness News
San Antonio, TX

Sonya D. Heitshusen
WHO-TV Channel 13
Des Moines, IA

KDFW - FOX 4 News
Dallas, TX

KENS 5 Eyewitness News
KENS-TV
San Antonio, TX

KGW-TV, NewsChannel 8
Portland, OR

KMBC 9 News
KMBC-TV
Kansas City, MO

KMOV Channel 4
KMOV-TV, CBS
St. Louis, MO

KPRC 2
Houston, TX

KTVT-TV, CBS 11 News
Fort Worth, TX

John Kukla
KDFW-TV
Dallas, TX

Clay Loney
FOX23 News
Tulsa, OK

Larry Michael
Washington Redskins
Ashburn, VA

Larry Moore
KMBC 9 News
Kansas City, MO

NBC10 Philadelphia
WCAU-TV
Bala Cynwyd, PA

Kerri O'Brien
ABC 8News - WRIC-TV
Richmond, VA

Joe Silvestri
Good Day Street Talk
Fox 5 NY
New York, NY

Tina Stoklosa
NBC10 Philadelphia
Bala Cynwyd, PA

Eileen Whelan
WJLA NewsChannel 8, ABC7
Arlington, VA

WHO-TV Channel 13
Des Moines, IA

WJBF NewsChannel 6
Augusta, GA

WJLA NewsChannel 8, ABC7
Arlington, VA

WLKY Channel 32
Louisville, KY

WOAI-TV - News 4 San Antonio
Today
San Antonio, Texas

WRGB Channel 6 News
Schenectady, NY

Other

Mark Romig
New Orleans Tourism & Marketing
Corporation
New Orleans, LA

Sidney D. Torres, IV
IV Capital
New Orleans, LA

The Volunteer Leadership Conference 2017 Elite Award Recipients

Recognize outstanding contributions and achievements of a select group of LLS volunteers and organizations making an extraordinary impact for LLS and its mission.

National Corporate Leadership Award

Corporation/organization with fundamental alignment to the LLS mission.

United Food and Commercial Workers

The Excellence in Policy Advocacy Award

Volunteers who have successfully advocated for policy changes that will have a real impact on blood cancer patients.

Kathy Hawkins
Central Pennsylvania Chapter

Philanthropy Award

Individual, family, or foundation that demonstrates outstanding philanthropic leadership in support of LLS Mission.

Michael Copley
Chairman, LLS's Beat AML Campaign

John Kellenyi
Vice Chairman of LLS's Beat AML Campaign

Volunteer Leadership Award

Recognizes a volunteer with exemplary leadership and extraordinary dedication to LLS and its mission.

Brad Vick
Minnesota Chapter

Pinnacle Award

Individual who has demonstrated exceptional leadership, dedication, and extraordinary commitment to LLS campaign fundraising efforts and the overall LLS mission.

John Greene
Greater Bay Area Chapter

Patti Robinson Kaufmann Spirit Award

An incredible patient access volunteer and survivor.

Theresa Stevens
San Diego/Hawaii Chapter

Robert de Villiers Award

The highest honor and pinnacle of achievement for a volunteer, named after the son of LLS's founders.

Dave Frantze
Mid America Chapter

Donors

We gratefully acknowledge the individuals, foundations and corporations that generously supported LLS's mission during this fiscal year.

Pharmaceutical Funding Legend

- PA Patient Access
- PP Public Policy
- R Research
- C Campaign

* Denotes multi-year commitment

Leadership Circle \$1,000,000 and Above

AbbVie Inc. PA PP R C
 Monica and Timothy Babich*
 Dr. Evelyn Bata
 Bristol-Myers Squibb PA R C
 Burlington
 Celgene Corporation PA R PP C
 Cynthia and Frank Gasztonyi*
 Genentech/Biogen PA PP C
 Gilead Sciences, Inc. PA C
 The Harry T. Mangurian, Jr. Foundation*
 LIUNA Charitable Foundation*
 The Norcross Foundation, Inc. In Memory of Herrick F. Norcross, Jr. (Rick)*
 The Olive Garden Italian Restaurant
 Pharmacyclics/Janssen PA PP C
 Donald Porteous*
 Salesforce
 The Sarah Cannon Fund at the HCA Foundation*
 Takeda Oncology PA PP C
 The United Food and Commercial Workers International Union (UFCW)
 The United Food and Commercial Workers International Union Canada/TUAC
 Walgreens

Champion \$500,000 - \$999,999

Amgen, Inc. PA R C
 Barclays
 BMC
 Elbit Systems of America
 Lang/Stiglitz Family Fund
 Kathryn and Rush Limbaugh
 Pfizer, Inc. PA C
 PVH
 Sarah Cannon Blood Cancer Network
 Subaru of America, Inc.
 Teva Pharmaceuticals PA
 The Wawa Foundation

Visionary \$250,000 - \$499,999

Advisors Excel Team
 BDO USA, LLP
 Bloomberg
 Carolinas Healthcare Foundation*
 Carter's, Inc.
 Circle of Service Foundation*
 Dhaval Dhru
 Discount Tire
 The Dougherty Family Foundation
 Marian Dozier*
 Dr. Ralph & Marian Falk Medical Research Trust
 Charles Esten*
 FIS
 Global Franchise Group
 Goldman Sachs
 The Herman O West Foundation
 IHOP
 Incyte Corporation PA
 John B. Kellenyi (Late)
 Kite Pharma PA PP
 Christine and Timothy Lindenfelser*
 Nike
 Novartis Pharmaceuticals PA PP
 Orokawa Foundation
 Perfumania

Renaissance Charitable Foundation, Inc.
 Rising Tide
 Floyd Singleton
 Stater Bros. Charities
 Truist
 Wells Fargo
 Western Digital

Patron \$100,000-\$249,000

7 Eleven Alon
 ADF Companies - Pizza Hut
 Aetna
 James Allen
 Alto-Shaam, Inc.
 Ameren Missouri
 Anthem Blue Cross Blue Shield
 Astellas R
 At Home
 BD
 Blue Cross and Blue Shield
 The Boldt Family Philanthropy Fund*
 Janice and Peter Brock*
 S. Lori Brown
 Barry Cheskin and Lisa Norcia*
 The Coleman Foundation, Inc.*
 Liz and Michael Copley*
 Dell - Silicon Valley Community Foundation
 Deloitte
 Ann and John Doerr
 Earl D. and Marian N. Olson Fund
 EY
 F. M. Kirby Foundation, Inc.
 Florida Cancer Specialists
 Andrew Foley
 Fox5 WTTG
 Furniture Fair
 Chiyoko Furukawa*
 GE Foundation
 GEICO
 HM Insurance Group
 Kristin and John Hyland
 The Jake Wetchler Foundation

Imagine a Cure for Leukemia
 Jazz Pharmaceuticals, Inc. PA
 Juno Therapeutics, Inc. PA
 Karyopharm Therapeutics, Inc. PA
 KPMG
 Lehigh Valley Restaurant Group, Inc./ Red Robin
 Joyce and Larry Lacerte*
 Katherine and James Lau*
 LG Peeps
 Lieblch Family Gift Fund*
 Tisha Lindberg
 The Lyon Family Foundation
 Bonnie Magid Roditti*
 The Marge & Charles Schott Foundation*
 Clyde S. McGregor and LeAnn Pedersen Pope
 Medtronic Foundation
 Merck & Company PA
 Muy! DBA Wendy's
 NARS
 NewYork-Presbyterian
 NSC Global Ltd.*
 Lynne and Gregory O'Brien
 PhRMA
 PwC
 Rahr Corporation*
 Maria Ramos-Person
 The Reinalt-Thomas Corporation
 Silicon Valley Bank
 Southwest Convenience Stores
 Terumo BCT
 Textron Matching Gift Program
 Angela and Gary Trovato*
 UCLA Health
 Walt Disney Company Foundation
 Weill Cornell Medicine
 Randolph Writz
 Anonymous (2)

Innovator \$50,000-\$99,999

14 Foods / Dairy Queen
 ABM Onsite Services, Inc.

Agios Pharmaceuticals, Inc. (PA) (PP)
 All Round Foods Bakery Products, Inc.
 Allegheny Foundation
 American Airlines
 Anthemic, LLC
 The Arthur M. Blank Family Foundation
 AstraZeneca Pharmaceuticals (PA) (R)
 Bank of America/Merrill Lynch
 Anthony Becht
 The John and Frances Beck Family Foundation
 C. Kenneth & Laura Baxter Foundation, Inc.
 The Blackstone Charitable Foundation
 C.J. Coakley Inc.
 Cancer Treatment Centers of America
 CareFirst BlueCross BlueShield
 Ron Cohn
 Comcast
 Communities Foundation of Texas
 Community Visionary Enterprises
 David Yurman
 William Dickinson
 DLA Piper, LLP
 Dominion
 Enmark Stations, Inc.
 First NBC
 Flamingo, Inc.
 Ethel and Bernard Garil
 Generac Power Systems
 Gexa Energy
 Neda Ghahremani
 Guggenheim Life and Annuity
 Hargrove
 Hildegard D. Becher Foundation Inc.
 Infor Global Solutions
 The J. Willard & Alice S. Marriott Foundation
 Hamilton E. James
 Jerome S. & Grace H. Murray Foundation
 Jersey Mike's Subs
 Johnson & Johnson
 Gerald Kafka & Rita Cavanagh
 Richard Kay
 Kent's Run
 Emily and Neil Kishter
 Kolache Factory

Koppers
 Paul Leinwand
 Lighthouse Investment Partners, LLC
 Louisville Metro Government
 Donna Lyon
 Mallinckrodt Pharmaceuticals
 McKesson Specialty Health
 Medical Mutual
 Mercer
 Thomas Moore
 Moppie's Love
 Kevin Morris
 Tommy Morrison
 Northrop Grumman
 Northwestern Mutual - Minneapolis
 NYCB
 Pacific Union
 Pamela B. Katten Memorial Leukemia Research Foundation
 Ping Y. Tai Foundation, Inc.
 Postage Stamp Farm Foundation
 PRG
 Rampart High School
 Amber and Tim Randolph
 Suhail and PJ Rizvi
 Robert E. Gallagher Charitable Trust
 Janet and Martin Robertson
 Nancy and Richard Rogers
 Scott Safety
 David Salzmanowitz
 Sanofi-Aventis U.S., LLC (PA)
 Sarver Charitable Trust
 Linda Schwartzstein*
 Stephen A. Schwarzman
 Lauree and Robert Simmons
 Mary Elizabeth and George Smith
 Southwestern Ohio Wendy's
 Starfish Foundation
 Todd Reed McClintock Research Foundation
 Sidney Torres, IV
 Trevor Loughlin Foundation Inc.
 UC Irvine Health Care
 UPMC
 Kathryn and Leo Vecellio
 The Victor E. and Caroline E. Schutte Foundation - Trust E
 Walmart
 Angie and Don Ward
 Washington Area Mercedes-Benz Dealers/Mercedes-Benz USA, LLC
 The Wellmark Foundation

Advocate \$25,000-\$49,999

27th Group
 Accredited Home Lenders Foundation Fund
 Akin Gump Strauss Hauer & Feld, LLP
 Alex and Ani
 The Alice Lawrence Foundation, Inc.
 Patrick Allender
 Allstate Insurance Company
 Alverin M. Cornell Foundation
 American Systems
 Madeline and Stephen Anbinder
 Jean and C.E. Andrews
 Angel Wings Foundation
 James Bailey and Roann Costin
 Bank of America
 Barreto Family
 Kaspar Basse
 Baylor Scott & White
 BB&T
 Benchmark Rehabilitation
 Bert Smith & Co. Certified Public Accountants
 Beta Engineering
 Black Dog Charity
 Susan and Ed Blumenfeld
 Bob Ruth Ford, Inc.
 Bon Secours St Francis Cancer Center
 Melvin and Valorie Booth
 Leon and Michael Borchers*
 Bowliman T. Bowles
 Brayton Purcell, LLP
 Breeden-Adams Foundation
 Todd Brinkmeyer
 Pamela and Morris Brown
 BTIG, LLC
 Jeff Burch
 C.H. Robinson Worldwide
 Capital One
 Michael Capone
 Carlos Batista Foundation
 Carlson Family Foundation, Inc.
 Carz Cruizn, INC.
 Casino Arizona
 CB Richard Ellis-N.E. Partners, LP
 Kathy and Sammy Cemo
 Centene Corporation
 The Chambers Family Foundation

The Charles T Bauer Charitable Foundation
 Chesmar Homes CT, LTD.
 Circle City Foundation
 Cleveland Clinic
 Cohn Family Foundation
 CohnReznick
 The Colton Company
 Comier
 Community Foundation of New Jersey
 Community Foundation Sonoma County
 Currie Garner Family Fund
 Daiichi Sankyo (PA)
 Dana-Farber Cancer Institute
 David F. Weeda Foundation
 David M. Polen Retirement Plan Trust
 Dealer Tire
 Del-Camp Investments Inc.
 Deltek, Inc.
 Digita Health Philadelphia
 Edith M. Schweckendieck Trusts
 Edward B. Dunlap, Jr Foundation
 The Edward G. & Kathryn E. Mader Foundation
 EFESTÉ
 Equestrian Sport Productions, LLC
 Everyday Health, Inc.
 Ezralow Family Trust
 FarmHouse Fraternity- Troy University
 Fernandez Foundation, Inc.
 First Weber Group Foundation
 Florida Power & Light Company
 For Julie Foundation, Inc.
 Forward Advantage Foundation, Inc.
 The Foundation at Rolling Hills
 Chad Frampton
 Franklin American Mortgage Company
 Garden City Turkey Trot Race Committee, Inc.
 General Dynamics Information Technology
 Patricia and Chris Giannoulas
 Giant Food
 Greehey Family Foundation
 Rachel and Eric Green
 Hackensack University Medical Center
 Jen Hall
 The Handlery Foundation

Hannig Law	Luppe & Paula Luppen Family Foundation	RSM US Foundation	Wet Willie's Management Corp.
Pete Harman	M&T Bank & Wilmington Trust	Joan and Paul Rubschlager	The William J. Shaw Family Foundation
The Harry and Jeanette Weinberg Foundation, Inc.	Macquarie Group	Runners for Life	William R. Rich Foundation
Hazmat/Kenworth	West Marine	Runners for Life Houston, LLC	Brenda and James Wishbow
Heartland Blood Centers	The Mark Becher Family Giving Fund	The Ryan Foundation	Donna and Glen Wolther
Higgins Family Charitable Foundation	Paula and Larry Marshall	Pat and Jeff Sachs*	WTOP Radio
Highland Park Village	Mason City School District	SAIC	Anonymous (4)
Highmark	Massapequa Turkey Trot, Inc	San Jose Earthquakes	
Al Hill Jr.	MAXIMUS Foundation	Arlene Schafer	
David Hitz	Mazda North American Operations	Schafer Family Foundation	
Howard Family Foundation	McKesson Specialty Care Solutions	Helena Scott	
Huntsman, LLC	Medical Properties Trust	Seedlings Foundation	
Niles Hushka	MedImmune	Sempra Energy Foundation	
Hy-Vee, Inc.	Melryder Foundation*	Sentrillion, LLC	
ICAP Services North America, LLC	Merck Foundation	Shlomo and Tamar Rechnitz Charity Foundation	
iHeartRadio	Mobile Beacon	Shire ^(PA)	
In Loving Memory of Betty Karpinski	Janice Moran	Sidley Austin, LLP	
J Frank Schmidt Family Charitable Foundation	Morgan, Lewis & Bockius, LLP	Solutionreach, Inc.	
J.T. Tai & Co. Foundation, Inc.	Jack Morkan and Clare Vanderbeek	St. Joseph's/Candler Hospital	
Scott Jackson	Beverly and Stephen Movius	Donald Steiner	
Jersey Mike's Corporate Advertising Fund	Mud Pie	The Stephen Birnbaum Foundation	
Jessica Drew Sunshine Memorial Fund	MUFG Union Bank Trust Dept	Stormont - Vail, Inc.	
The Jim Jacobs Charitable Foundation	North Bay Cancer Alliance	Michael Sweig	
John Theurer Cancer Center	Northside Hospital	Sylvan/Laureate Foundation	
Cynthia & Dan Johnson	Notre Dame Academy High School, Inc.	Texas Capital Bank	
Kaiser Permanente Financial SVCS OPS	Jerome Oakey and Laura Randolph	Texas Oncology ^(PA)	
The Kakaty Family	Odin, Feldman & Pittleman, PC	Thunderbirds Charities	
Susan and Daniel G. Kane	Otsuka America Pharmaceutical, Inc.	Tigerfight	
Tammy Karnes	PenFed	Baker Tilly	
Keller Williams Realty McLean	Penn Medicine	Toys R Us Children's Fund	
Kent Island American Legion	Peoples Natural Gas	Treen Events	
The Keri Shull Team	Stephanie and Scott Petty	UF Cancer Center at Orlando Health	
David Kopp	PFG/Vistar	UNC REX Healthcare	
Kosair Charities Committee, Inc.	Philadelphia Multiple Myeloma Networking Group	United Way of Greater Milwaukee	
Kroger Co. Foundation	Plaid Pantries, Inc.	UPS	
The Kroll Family Foundation	Planned Systems International	Valero Energy Foundation	
Don C. and Diane S. Lake Family	Plastics Industry Association	Vanda Pharmaceuticals Inc.	
Legacy Mutual Mortgage	Poker Central, LLC	Venable, LLP	
Eugene Lewaniak	PricewaterhouseCoopers	Phil Venables	
Lilly USA, LLC	Publicis Health Media	Virginia Sheldon Jerome Foundation	
Lindy Paving	QuintilesIMS	Michael Vlock	
Lockton Companies, LLC	The Randy and Barbara Ann Frankel Foundation	VyStar Credit Union	
Louisville Jefferson County Metro Government	J. Miles Reidy	W.R. & Norma Ramsey Foundation	
Amanda and Jody Lucero	Riemer & Braunstein, LLP	Waddell & Reed/ Ivy Investments	
Lunardi's Market	Robbins Family Foundation	Washington Business Journal	
	The ROMA Foundation	Washingtonian	
	Ronald Caporale	Ellen Weissberg	
	Debra Ross	Gloria Weissberg	
		M. Weissberg	
		West Endowment	
		West New York Restoration of CT, Inc.	

Giving Circle \$10,000-\$24,999

Abacus Technical Services, LLC
ABC 7/WJLA-TV
Daniel and Megan Abeln
Acadia Realty Limited Partnership
Accel
Accenture
Access Point, Inc.
Accord Healthcare, Inc.
Accountable Health Solutions
Accura Calibration
The ACE Family Foundation
Ann Milton Adams
Advantage Pharmaceuticals
AEG Global Partnerships
Agency Rx, LLC
Isao Aiba
Air Products Foundation
Evelyn Akers
Alamo Group
Albany Rods and Kustoms, Inc.
Albertsons Safeway
Albrecht Family Foundation
Alliance Construction Group
Alliance Data
Alliant Insurance Services, Inc.
Allison-Smith Company
Allmond & Company, LLC
Allstate Foundation
The Altschul Foundation
AM Charity Fund
Amegy Bank
American Construction Company
American Direct Marketing Resources LLC
American Electric Power
American Insurance Group
AmerisourceBergen Foundation
The Tarang and Hirni Amin Family Fund
AmTrust Bank/NYCB

Anadarko	Michael Bartschat	Business Review Journal	Susan and Jay Clark
Denise Andriello-Higgins	Lee Bates	Jennifer and Jeffrey Butler	Clark Construction Group, LLC
Anne Arundel Health System	Bath Fitter	Butler Family Foundation	Harland Clarke
AppLovin	Douglas Baughman	By Light	Clarkson Eyecare, Inc.
Arcadia Realty Limited Part.	BCH Events	Dr. John Byrd	Clearview Cancer Institute - Huntsville
AREVO Group, Inc.	Beacon Capital Partners	C. Jay Moorhead Foundation	Clune Construction Company
Argen	Beardmore Subaru	Mary Cahill	Coca-Cola
ARIAD Pharmaceuticals, Inc.	Beltway Cleaning Services	Caliber Collision	Cocherl Family Foundation
Matthew Arno	The Belvedere Cove Foundation	California Coast Credit Union	Patrick Colligan
Array Marketing	Bender Foundation, Inc.	Callaway Golf Company	Christine Comaford
Arrow Exterminators	Berkshire Bank	The Callow Family	Commerce Bank
Robert Ashby	The Bernal T. Chomeau Private Foundation	Mark Campana	Commonwealth Land Title Insurance Company
Ashwood Constructions, Inc.	Bessemer Trust, Jeong Kim	Renzo Canetta	Community Medical Centers
ASRC Federal Holding Company, LLC	BIO	John Cao	Robyn and Don Conlon
The Associated Credit Union Foundation	BioClinica	Capgemini US, LLC	Agnes Connors
Assurant	Stanley Birkhead	Capital City Bass Masters	Conti Family Foundation
Assurant Specialty Property	Stacey and Seth Blackman	Capitol Federal Foundation	Continental Food Management (Wendy's)
Astex Pharmaceuticals	Thomas Blair	TJ Caplinger	John Convery
AT&T	Christine and Leroy Blanchette	Carahsoft Technology Corporation	Katherine Cook
Atara Biotherapeutics, Inc. (PA)	BLG Trust	Carl and Henrietta Herrmann Family Foundation	The Phyllis M. Coors Foundation
Athletico Management, LLC	Blues for Kids Foundation	Carlton Family Foundation	Cora and John H. Davis Foundation
Atlanta Fine Homes Sotheby's International Realty	BMO Harris Bank	Carnival Foundation	Cordia Partners
David Atlas	BNY Mellon Corporation's Community Partnership	Carol A. Stuhr Family Foundation	Alison and Mike Corkery
Augusta Oncology	Traci Bolte	Colm L. Carr	Costco Wholesale
Daren Austin	Tammy Bond	Carr Companies	County of San Diego - District 4
The Austin E. Knowlton Foundation	Booz Allen Hamilton	Linda and Donald Carter	Courtney Knight Gaines Foundation
Austin Hardware & Supply	Boscovs	Carter Family in loving memory of Jason	Crane Composites
AvalonBay Communities, Inc.	Boston's Best Coffee Roaster	Debbie and Michael Casey	Credit Suisse
Avella Specialty Pharmacy	John Boyle	CBIZ MHM, LLC	Ralph Cross
Steven Averbuch	Brady Ware & Company	CDI Corporation	Cross Country Consulting
Babcock Ranch Foundation, Inc.	Brandt Companies, LLC	Centerpoint Energy	Cruise Industry Charitable Foundation
Bad Daddy's Burger Bar	Brandywine Realty Trust	Century Elevator Maintenance Co.	CSI Leasing
Isabel Bader	Brenda Cheney's Sip N' Sail	Cerner Corporation	CSRA
Dylan Baker	Brian Chittenden, Legacy Bank	Chad's Lightup Leukemia	Curis, Inc.
Jack Baker	Bright Funds Foundation	Christina and Lawrence Chapman	Cushman & Wakefield
Baker Botts	BriteVerify	Charlotte Radiology	CW Capital
Baker Concrete Construction	Broadstreet Pancakes, Inc. DBA IHOP	Chase	D.A. Davidson Companies
Baker Hughes Foundation	Andrew Brock	Chef's Market Cafe & Takeaway	D3 LLC Gold Sponsorship
Baker Roofing Company	Michael Brooks & Maria Fotiu	Chiaromonte Construction Company	Danielle D'Aiello
BankSouth	Brown Gould Kiely	Children's Mercy Hospital - Kansas City	Danaher Corporation
Banner MD Anderson	Cynthia and Joe Bruno	Chipotle	Daniel & Karen Lee Family Foundation
The Bar LV	William Bryan	Christus Health Santa Rosa	Darrenkamps Mount Joy Market, Inc.
The Bar Method	Jane Buckley	Chucky's Champions, Inc.	David Spence's Cancer Fund
The Barbara and William Rosenthal Family Foundation	Buckley Family Charitable Foundation	Church & Dwight Employee Giving Fund	Donald W. Davis
Nonnie and John Barbey	Mike Budenholzer	Cincinnati USA Regional Chamber	Elaine and Jim Day
Barings	Bullock's Cruise In	Citco Canada	Glen de Vries
John Barr	Sandy Burden	Robert Citrone	The DeBruce Foundation
Bartlett Cocke General Contractors	Michael and Sarah Burke	Cynthia and Christian Clark	Deerpoint Group, Inc.

David & Barbara Dehaemers	Eric Scherbarth Leukemia Research Foundation	T.H. Garner	The Harvey E. Najim Family Foundation
Jason Dehaemers	The Escher Foundation	Gary and Pennie Abramson Charitable Foundation	Harv's Car Wash 1901, LLC
Dekker/Perich/Sabatini, Ltd	ESPN908	The Gaughen Management Group	Allen Hawkins
Delta Dental	Amir Etezazi	Chris Gautreau	HCA West Florida
Demolition and Environmental Company, LLC	Evolution Fighting Championship LLC	Gaylord Hotels	Healthcare IT Leaders
Denver Beer Olympics	Expeditors	Frank Geary	Heartland Express Inc.
Denver Region Toyota Dealers Association	Express Scripts, Inc.	Anonymous	Heathcare Management Administrators
DEPCOM Power	Eye Center of Charleston	Gene Foundation	HEB Grocery Company
Robert Dickinson	Bryan Ezralow	Genpact	Heidrick & Struggles, Inc.
Joseph Dimenna	Marc Ezralow	The George & Lena Valente Foundation	The Helis Foundation
Dittmar Company	Fairmont San Jose	George and Mary Josephine Hamman Foundation	Henkels & McCoy Inc.
The Division of Hematologic Malignancies and Cellular Therapeutics	FALL Golf Classic	The George F. & Myra Shaskan Foundation, Inc.	Henry Schein Cares
DLE Equipment	The Fama Family Charitable Fund	George L. Shields Foundation, Inc.	Hewlett Packard Enterprise
DoMyOwnPestControl.com	Fansler Foundation	The Gerald and Paula McNichols Family Foundation	Hilltop Center, LLC
Lucy and Bob Donahue	Faramarz Fardshisheh	Gila River Casinos	Sam Hirbod
William J. Dore	Federal Realty Investment Trust	Ann and Peter Gilbert	HITT Contracting, Inc.
Paul Dorman	Edward Fein	Global Payments, Inc.	The Hitz Foundation
Mary Jo Dougherty and Mike Roark	Gail Fernandez	Global Traveler	HM Life Insurance Company
Doylestown Health Cancer Institute	America Ferrera	David Gochman	Hogan Lovells US, LLP
Driscoll's	The Ferriday Fund Charitable Trust	Jason Goldberg	Holistic Financial Partners
Max Duckworth	Fidelity Brokerage Services, LLC	Goldberg Charitable Trust	Hope 4 Adam
Duke Cancer Institute	Dorothy Fields	Lee Goodwin and Linda Schwartzstein	Liz Hoster
Milane Duncan-Frantz	Findlay Automotive Group	Tammy Gorham	Hot Ticket Racing
Dyer Family Foundation	Constance Fischer	Bob Graham	Houston Methodist The Woodlands Hospital
E. & J. Gallo Winery	James Fisher	Grant Thornton LLP	Howard Burris Family Gift Fund
E E Reed Construction, LP	Annie Flaig	Greenberg Traurig	Howard Hannah Real Estate Services
The E. Kenneth And Esther Marie Hatton Foundation	Flamingo Charities, Inc.	Grip It & Rip It	Eric Hoxsie
e3 Wealth	Florida Crystals Corporation	Bosa Grubich	The Hughes Family
Eastdil Secured, LLC	FMC Corporation	Anthony Guadagnino	Richard Huxtable
Deane Eastwood	Ford UAW Parts Depots	Janet and David Gualdoni	IBERIABANK
Eckert Seamans Cherin & Mellott	Fox Valley Hematology & Oncology	Gulf Coast Bank & Trust Co.	ICE Mobility
ECN Financial LLC	Fragrance Resources	Jeff Gusinow	ImmunoGen
Ed & H Pillsbury Foundation	Dianne and Richard Franco	H. Lee Moffitt Cancer Center & Research Institute	Independent Health
Ed Morse Automotive Group	Commie Frankino	HAC, Inc.	Indepth Gives Back
The Edgerley Family Foundation	Frauenshuh Hospitality Group of TN, LLC	Hadden Landscape, Inc.	Infinity Pharmaceuticals
Gerald Eisenberg	Fred Smith Plumbing & Heating Co.	The Laverna Hahn Charitable Trust	InfraSource, LLC
Trisha and Chuck Elcan	Freeman Boatworks, LLC	The Hallem Family	Insulators International Health Hazard Fund
Element Financial Corporation	Freepoint Commodities, LLC	Corb Hankey	Intouch Solutions
Emerson Charitable Trust	Freight & Salvage Coffeehouse	HARD Summer / Live Nation, Inc.	IPA Foundation
Enerplus	Friedman Advisors, LLC	Harkin Builders, Inc.	Iroquois Middle School
The Enrichment Foundation	Friends of Katelyn	Harlan Community High School	The Irwin and Ginny Edlavitch Foundation
Enterprise	Frank Furia	Janet and John Harper	The Isaacson IRV Trust
Enterprise Holdings	G3 Enterprises	Daniel Harrington	ISN
Enterprise Rent-A-Car	Gables Residential	Charles Harthan	Ivie & Associates
Epizyme	Galen College of Nursing	Clyde V. Hartline Jr.	J.P. Morgan
ePlus Technology, inc.	Garber Automotive Group	Donna Hartman	Jack Henry & Associates
EQT	Carlos Garcia		Jack Link's
	Israel Garcia		
	Gardner Family Trust		

Jane and David Jackson	Kiddar Group Holdings, Inc.	Loretto Kane, John and Rosanne Strittmatter	Scott McManus
Jackson EMC	Kilroy Realty, LP	Lori & Rick Rosmann Foundation	Michele and Scott McMullin
Luke Jandl	The Kirlin Group	The Lotz Family Foundation	Jennifer and Robert McNeil
Jandl Beverage Co	Stuart Kirscht	Low Book Sales	William McNitt
Jandl Farms, LLC	John Kisthardt	The Lowlands Group, LLC	MD Anderson Cancer Center
The James Cancer Hospital & Solove Research Institute	Chuck Kiven	Bruce Lowthers	Mead Land Services
The James H. Reid, Jr. Family	KLA Laboratories, Inc.	The Ludwig Family Foundation, Inc.	Medidata
James River Equipment	Chris Kolb	Lustine Toyota Dodge	Meg and Bennett Goodman Family Foundation
James T Ueltschi Foundation	Koons Arlington Toyota	Allison and Howard Lutnick	Megan's Wings, Inc.
Jan3150J LLC	Joseph Kopser	M7 Aerospace	Danielle Meier
Jacqueline Jankowski	Geraldine and Charles F. Kriser	Mabee/Gumpert Philanthropic Fund	Joseph Meisner
Janus Henderson Foundation	Lisa and Steven Kristel	Mack Madness, Inc.	Otilia Melwani
Brian Jaramillo	Shannon Krogh	Robert Maher	Members 1st F.C.U.
The JBG Companies	K-VAC Environmental Services, Inc.	Major Hyundai	Memorial Health University Medical Center
JE Dunn Construction	Luz Kyncl	Make Yourself Foundation	Merchandise Pickup Service, Inc.
Jewish Federation of Cleveland	David Labuda	Chuck Malk	Meritor, Inc.
John Edward Fowler Memorial Foundation	Stacy Lachapelle	Manatt, Phelps & Phillips, LLP	Caren and Phillip Merrick
The John G. Rangos, Sr. Charitable Foundation	Ladish Co. Foundation	Manpower International, Inc.	Cayre and Alexis Michas
The John Newell Wade Foundation	Eddie Lafferty	Maple Grove Elementary School	Microsemi Corporation
John Wall Family Foundation	The Laffey McHugh Foundation	Mariner Holdings, LLC	Miles & Stockbridge, PC
Diana and Murray Johnson	Lake Family Foundation	Mark Miller Toyota	Mark Milla
Judith and Jack Johnson	Lake Norman Chrysler Dodge Jeep Ram	Lois Markovich	Miller Paint Company
Louise Johnson	Lake Norman Chrysler Dodge Jeep Ram	The Marksmen Company	Eric Miller, MD (PA)
Edward Jones	Lalezarian Properties	Marquise Auction	Nancy and Patrick Minan
Jones Day	Kelley and Jay Lamy	Marsh Risk & Insurance Services	Rusty and Barry Minkoff
Jones Lang LaSalle	Land Rover	John Marten	Mitsubishi Hitachi Power Systems
Karen and Kent Jordan	Landmark Construction	Lucy Martin	Mizuho Americas
George Joseph	Tracy and Ben Lange	Martin-O'Neil Cancer Center	Monta Vista High School
Aaron Joyce	Langford Electric, Inc.	Marty's, Inc.	Frank Moore
June & Cecil McDole Charitable Fund	Lisa Lawin	Marylou's Coffee	Donald Moreau
K Machine Industrial Services	Allison Lee	Mashkin Family Foundation	Morgan Franklin Consulting, LLC
Kaiser Permanente	Left Hand Brewing Company	Massachusetts General Hospital	Morgan Stanley
The Kakaty Family	Leo Seal Family Foundation	Kim and Matt Mausser	Morgan Stanley Foundation
Kansas Ready Mix, LLC	Leon S. Peters Foundation	Maverick Capital Foundation	Sasha Moritz
Kappa Sigma Theta-Delta	Ted Leonsis	Jon Maxson	Morris & Templeton Insurance
Kathryn Dent and John L. Tillman Charitable Fund	Lewis Wagner, LLP	Frederic Mayerson	Marcie Morrison
Kayleen Larson Legacy Foundation	Jason Leyva	Mayo Clinic Cancer Center	Traci and Bill Morrow
KBS Trucking	Life Science Tech, LLC	Mayo Foundation for Medical Education and Research	Brint Morrow
KCE Structural Engineers	LifePoint Health	Mayo Performing Arts Center	Alicia Moya
Mary Beth and Christopher Kearns	Lightning Foundation, Inc.	MB Financial Bank	Elizabeth M. Mungo
Thomas Kelley*	Linn Ligon	Thomas McCarthy	John Murphy
Keiser	Lillie Young & Associates, LLC	McCownGordon Construction	Murray & Guari Trial Attorneys
Keith Busse Enterprises	Mike Linares	Alta and Henry McCrary	Names Family Foundation
Kennedy Lane, LLC	Connie Lindsey	Laura and Paul McDaniel	Leslie and Larry Nance
Diane and Bill Kenny	Lion Apperal	McDermott Will & Emery	NASCAR Foundation
KentuckyOne Health	James Lites	Erin and Sean McGould	National Philanthropic Trust
KeyBanc Capital Markets	Live Nation Worldwide, Inc. - TSO	The MCJ Amelior Foundation	National Rural Utilities Cooperative Finance Corporation
KeyBank National Association	Lizanell and Colbert Coldwell Foundation	Kathy and John McKinley	Nationwide Vision Center PC
	Locke Lord, LLP	Stephanie and Edward McLaughlin	Nature Nate's -The Honey Rock Fund
	Lockton Companies	Matthew McManus	
	David Longo		

Nature's Variety	The Paul B. Greetin and Beryl S. Greetin Foundation, Inc.	The Pumping Station, Inc.	Rock Spring Contracting, LLC
John Nauseef	The Paul E. Singer Foundation	QIBQ, Inc.	Rockefeller Group
Nebraska Medicine	Gina and Michael Pavelec	Quality King Distributors	Roderick S, Flossie R, & Helen M Galloway Foundation, Inc.
Nestle Purina PetCare Company	Pegasus Builders, Inc.	Quest Diagnostics	Lynn and Peter Rogers
NetApp	Anthony Pellegrino	Kathleen and Edward Quinn	Thomas Rogers
The Netter Foundation	Penn Color	Mona and Peter Quinn	The Rogers Family Foundation
New Car Dealers Association	Penn Medicine, Abramson Cancer Center	LaRae and Roger Quy	Annie Rose
Newmark Grubb Knight Frank	Penn Station East Coast Subs	Rabobank International	Robert Rosen
The Newsletter Pro	Penn Waste, Inc.	Radiology Alliance, PC	Karen and Ernie Rosenberg
NextEra Energy, Inc.	Pennant Foods Corp DBA Wendy's	Thomas Raffa	Lee Rosenthal
The Niello Company	Timothy Penney	Rambus	Roslyn Savings Bank
Nimble Storage	PEP Promotions	The Randy and Deborah Daniel Family Charitable Foundation	Ross Auerbach
NOCO	Pepco Holdings, Inc.	Barbara Rapaport	Royals Charities, Inc.
Guy Nohra	Pepsi	Raymond James Financial	RPM Pizza (Dominos Pizza)
Georgia North	Performance Honda Automotive Network	RCCA MSO, LLC	Run This Town 5K
North American Development Group	Whitney and Scott Perkins	Real Estate One Foundation	Ruoff Home Mortgage
Northwell Health	Ernest Pestana	RED Capital Group	Chris Russell
The Northwest Company, LLC	Pete Pugh Family Fund	Reece Holbrook Win Anyway Foundation, Inc.	The Rutter Foundation
Northwestern Mutual Foundation (WI)	Donita and Sheldon Petersen	Lisa and Bob Reeves	Ruttura & Sons Construction
Norton Cancer Institute	PEW Charitable Trust	Mark Regante	Jeffrey Sachs
Norton Rose Fulbright US, LLP	PGA TOUR Superstore	Regeneron Pharmaceuticals, Inc	The Safeway Foundation
Nova Restoration	The Phase Foundation	Reily Foods Company	Saint Benedict of New Jersey
NPL Construction Company	The Philadelphia Foundation	Angela and Michael Remen	Lauren and John Salata
NWN Corporation	Tom Philbrick	David Rendina	Harvey Saltzman
Morgan O'Brien	Philly Open for LLS	Marjorie Rendina	Sam I Am Foundation
OHC	Phoenix Suns Charities, Inc.	Tricia and Richard Rendina	Sam J. Frankino Foundation
Richard Ojeda	Pi Kappa Alpha Fraternity	Rendina Healthcare Real Estate	Sam Swope Family Foundation, Inc.
Olafson Foundation	Melissa and Mark Pietramale	James Resnick	Samuel C. Cantor Charitable Trust
Chad O'Leary	Pietro's Restaurant Group	Resolution Run to Kick Cancer, Inc.	Samuel P. Mandell Foundation
The Omer Foundation	James R. Pignataro	Chad Reynolds	San Diego Sign Company
Wendy and Mike O'Neil	Pilot Travel Centers, LLC	The Rhoda and David Chase Family Foundation, Inc.	Sanofi Genzyme
Nita and Michael Onustock	Pineapple Classic Foundation	Richard & Terez Abatecola Foundation	SAPNS2
Ostroff Associates	Pitt Ohio	The Richard and Charlotte Orear Charitable Foundation	John Saunders
Oxford Development	Placer SPCA	Richard M. Schulze Family Foundation	Rick Schaden
Pacific Coast Companies, Inc.	PMG – Property Markets Group	Nina Richardson	Schantz Orchards, LLC
Pacific Service Credit Union	PNC Bank	Rick Hendrick Chevrolet	Lisa Scheer and Ed Cone
Mr. and Mrs. James F. Palmer	PNC Financial Services Group	Ride Event	Scheid Family Wines
Palo Alto Networks Foundation	PNC Real Estate	Linda and Paul Ried	Jeff Schoepfel
PAR Electrical Contractors, Inc.	Polen Capital	Rifenburg Construction	Schorr-Lieberman Family Foundation
Lynne Parshall	Polo Ralph Lauren Foundation	Riot Games	Marilynn and William Scully
Joan Parsons	Ports America	RNDC South Carolina, LLC	Seaboard Corporation
Mary Parsons	The Power Of Bowser	RoadID	Seacap
PathGroup	PPG Industries	The Robert and Tia Gierkink Philanthropy Fund	Seattle Cancer Care Alliance
Patrick & Linda Foy Family Foundation	Monika and John Preston	Robert I. Goldman Foundation	Seattle Genetics (PA)
Patrick A. Bianchi Revocable Trust	Priority Physicians	The Robert Sprague Foundation	Mark Seltzer
Larry Patterson	Private Advisor Group	Ruth Robinson	Sempra Employee Giving Network
Paul and Sandy Edgerley Trust Fund, Fidelity	ProCon, Inc.		Sessions, Nathan, Fishman & Israel
The Paul and Sharon Dillon Family Fund	PSEG Foundation		Shelley Shackelford
	Public Service Enterprise Group Incorporated		The Earl and Brenda Shapiro Foundation

Dave and Sally Shepherd	Catherine Sullivan	Cal Turner, Jr.	Waxman Strategies
Sherwood Forest, SC	Deborah Sullivan	TurningPoint Global Solutions, LLC	WCAX TV
Shutterfly	Pam and Patrick Sullivan	U.S. Chamber Of Commerce	Visse Wedell
Linda and Bart Sichel	Peace Sullivan	U.S. Coffee RE Doug Shindler	Wedell Foundation (Marsha Wedell)
The Sidney, Milton and Leoma Simon Foundation	Suntrust Bank	UBS Financial Services, Inc.	Wegman, Hessler & Vanderburg
Signature Premier Properties	Suntrust Foundation	UCHealth	The Weiler Foundation
Silver State Schools Credit Union	Swedish Medical Center	Uhlig, LLC	David Weinstein
Mr. and Mrs. Gregory Silvers	Swing Fore the Cure	Unanet	Shari and Marc Weissbach
Lauren Simmons	Jo Ann Swienton	Union Bank	WellHealth Quality Care
Ira Simon	Jessica Symens	Union Bank & Trust Co	Marvin Wenger
Gilbert Simonetti	TAS Foundation	United Networks of America	Dayton Werner
Kathy and Jim Simpson	Ann Taylor	United Way of San Antonio and Bexar County	Westchester Triathlon Committee
Sinkula Investments, Ltd.	TCC	UnitedHealthCare Mid-Atlantic	Western Refining
Siteman Kids	Tee Off Against Corporation	University Hospitals	WGNA radio
Skoda Contracting	Temple Hoyne Buell Foundation	The University of Kansas Cancer Center	Charles Wharton
SL Green	Tender Years, Inc. Child Development Centers	Univision Management Company	Whelan Security
The Sleep Family	Teneo Strategy	Urban Concrete Contractors, Ltd.	WHM, LLC
Alisa and Sean Slovenski	Tennessee Oncology	US Bank	Kelly Wiechman
Douglas Smith	Lee Tepper and Dorine Real	US Bank National Association	Missy and Drew Wiedhorn
Jill Smith	Terakeet, LLC	US Mortgages	Colleen and William Wildner
Kristie Smith	Texas Air Systems, LLC	Beth and Natan Vaisman	The William G. Pomeroy Foundation
Maria Smith	Texas Instruments, Inc.	The Van Metre Family Foundation, Inc.	Carie Williams
Michael Smith	Judy and Michael H. Thomas	Vanguard Charitable Endowment	Tom Williams
Sue and Mike Smith	Thomas and Agnes Carvel Foundation	Vantage Oncology, Inc.	Williams & Connolly, LLP
William Smith	Sarah Thompson	Mari Vasan	Willis Towers Watson
Patricia Snyder	Susan and John Thompson	VCU Health System	Patricia Willson
So Long to Leukemia	Thompson & Knight, LLP.	The Vecellio Family Foundation, Inc.	Judy and James Wilson
Jerome Solove	Thompson, Habib & Denison, Inc.	Verywell (About)	Kendrick Wilson
Southeast Nebraska Cancer Center	Tilden-Coil Cares, Inc.	Viacom	The Winkler Family Foundation
William Speakman	Tim and Sarah Jur Foundation	Lois Vick	Winnsboro Petroleum Company
Spectrum Pharmaceuticals	Tishman Speyer Properties, LP	Katy Vickery	Wisnoski Family Fund in memory of Jackie
Carol and Mark Spisak	Tito's Handmade Vodka	The Victor E. and Caroline E. Schutte Foundation - 1959	Withum, Smith & Brown
Christina and H. Mark Sponseller	Tom & Virginia Jennaro Family Foundation, Inc.	Vidaris/LPI	WIVB-TV, Channel 4/CW23
St. David's HealthCare	Tom Donaldson, Papa John's	Vodaphone US, Inc.	Woodforest National Bank
St. Mary's Indian Orthodox Church of Rockland	The Tony and Cori Bates Family Fund	Volkert, Inc.	The Woodlands Development Company
St. Thomas Orthodox Church of India, Houston	Tooley Oil Company	VWR Charitable Foundation	World Bank Community Connection Fund
Gretchen Stangier	Total Wine and More	The W. O'Neil Foundation, Inc.	WRGB CBS6 TV
Star Anesthesia, (PA)	Dan Towriss	John Wacker	Tonia Wurzelbacher
Patrick Starley	Toyota of Gladstone	Waffle House Foundation, Inc	yb-squared
Barb and Tom Stayton	Transwestern	Becky and Wade Walker	Caroline Young
SteelFab, Inc. – South Carolina	TriAgile	Warmenhoven Family Foundation	Young Hearts, Inc.
David P. Steiner	Linda and Bob Trippel	David Warren	Young Texans Against Cancer
Sterne, Kessler, Goldstein & Fox	Paul Trotter and Elizabeth Neuman	Sara Warren	Adelaide Zabriskie
Kay and Davis Stewart	Truth North	Washington Gas	Cathy and Scott Zeilinger
John Stilley	Trust Company of the South	The Washington Redskins	The Zenith Insurance Company
Trevor Stokes	The Tsern Foundation	Washington University School of Medicine	Zotec Partners, LLC
The Stout Family	Kevin and Kristin Tu	Waste Technology Services, Inc.	Joseph Zvesper
Strikes Against Cancer	Turner Construction Company	Wawanesa Insurance	Anonymous (27)
Sub Pop Records			

Top Campaign Fundraisers

ADF Companies - Pizza Hut	Chase Bradley	Robert Dickinson	Brianna Haag
Aetna	Denise Bradley	Dave DiLuigi	Virginia Hall
All in for LLS	R. Michael Brannock, Jr.	Discount Tire	Timi Hallem
Sandy Allen-Bard	Dow Brantley	Chris Donahoo	Tammi K. Hanak
Nicole Ameduri Gonul	David Breen	Mary Jo Dougherty	Martha Handrich
Amgen	Amanda Brewer	Dow Brantley's Campaign Team	Joan Haratani
Barbara Anderson	Angie Brinkmeyer	Matt Doyle	Michelle Harding Lorber
Jenny Anderson	Katie Briscoe	Jonathan Duerr	Adam Harris
Andrew Dale & Team "No One Fights Alone"	Bristol-Myers Squibb	Emily Dumler	Jessica Harrison
Andrew Foley's Campaign Team	Brittany Rouse & Team Freedom	Amy Eberhardt	Megan Hart
C.E. Andrews	John Bunce	Molly Egloff	Kathy Hawkins
Vicky Andritsch	Adam Burck	Stephanie & Andy Eichberg	Henry Jacobson & Team
Ann Street Elementary School	June Burke	Sally Ekus	Suck-It-Cancer
Robert Annable	Burlington	Moustafa El Hariry	Heroes for Hazel
Michael Applebaum	Jayme Butcher	Elbit Systems of America	Paul Hickman
Rob Armstrong	Amanda Butler-Eisenfeld	Meghan Eller	Tim Hodges
At Home	Jon Butts	EY	Zoe Holland
August Robertson & Team Gus	Caitlin Fitzgerald & Cross My Heart and Hope to Live	Katie Falk	Tracy Howard
Avella Specialty Pharmacy	Dianne Callahan	Kevin Fay	Katherine Hurd
Mae Babbington	Bonnie Campagnuolo	Nicole Fink	Thayer Hutcheson
John Bacon	Cancer Crusaders	FIS	In Memory of Rick Horstman
Bank of Amerca	Robert "Spider" Cantley	Kyle B. Fisher	Jaime Orozco & Team Mickey
Bank of Amerca Merrill Lynch	David A. Caplan	Brooke Fitzgerald	Luke Jaindl
Banner MD Anderson	Stephanie Carroll	Five & Alive	Jakob Duchesneau & Team Brick Breakers
Barclays	Bill Carteaux	Rebecca Foerster	Maddie Jebavy
Michae Barry	Carter's, Inc.	Andrew Foley	Jerry Maahs Memorial Golf Outing
Alexander Basse	Celgene Corporation	Clayton Forman	Jessica Johnson
BD	Keegan Chapman	Patrick Foy, M.D.	Jonathan Fields & Team Hope
BDO	Charles Esten's Team Addie	Kyle Fritschi	Jonathan Gabay & The A-Team
Amy Beachy	Nadia Christensen	Erik Fromm	Jorge Rico and Team Jorge Strong
Beat It	Shar Christopher	Mike Gebhardt	Just Cure It
Hallee Becher	Spencer Coker	Hillary Gelfman	Just Cure the Damn Thing
Ella Behnke	Melissa Coligan	Genentech/Biogen Idec	Michelle Kadlacek
Stacy Bennett, MD	Colton's Army	Neda Ghahremani	Betsy Katten
Josh Bernstein	Tim Connor	Taki Gikakis	Amanda Kay
Meg & Luke Bernstein	Robert Cornett	Gila River Casinos	Mallory Keating
Wayne Berson	Ian Coyle	Scott Gildea	Kelly Delaney, Ellie Strockis & Team
The Beta Chapter of Sigma Alpha Epsilon	Court Creeden	Gilead	Kelly's Cancer Killers
Barclay Bishop	Matt Cromar	Sue Gilles	Curt Kersey
Blackstone	Crushin' Orange	Global Franchise Group	Kiven, Kotler, Lieberman, Fox, Joffe, Goldschmidt & Kepes
Rich Blaiklock	Ashley Curry	Go Team Trent	Mason Klain
Sophie Blasberg	Jennifer Curry	Ali Goethel	John Klein
BloodType: Brooklyn	Dan Cote & Team Pure4The Cure	John D. Goetz	Jared Kneitel
Brad Blumenfeld	Jana Davenport	Goldman Sachs	Koppers
BMC	J. Greg De Felice	Tricia Gonyo	Chris Kostanecki
Leslie Bohl	Jason Dehaemers	Jamie Graham	Robert Kottler
Box Out Cancer	Deloitte	Michael Graham	KPMG
	Larissa DeMarco	Eric Green	J.P. Kramer
	Joseph DeSabia	Greene Team	Annabel Krebs
	Tom DeTulleo	Emery Greenwood	Anthony Lallis
	Emily Dickinson	Sophia Gregory	
		Anthony Guadagnino	

Molly Levine	Aubry Padilla	Ben Shapiro	Team Sonia
Alyssa Lewandowski	Kara Pancoast	Virginia Sharitz	Team Sunshine Daydream
Jason Liljenquist	Elizabeth Parry	Bill Shaw	Team Survivin' & Thrivin'
Paul Lilles	Prina Patel	Sheri Stewart / Defy the Verdict	Team Twenty
Jason Llewellyn	Jessica Paulen Goldich	Ariel Shifter	Team Western Digital
Al Lord	Connor Payne	Rebecca Shope	Team: Taylor Allen & Dakota Fauntleroy
Amanda Lucero	Sophia Peppas	Tommy Shriver	Terumo BCT
Tood MacKay	Matt Pepping	Vershalee Shukla, M.D.	Teva Oncology
Scott Madaus	Perfumania	Morgan Signora	Mattie Thomas
Karen Maginn	Nick Peterson	Alexandra Singer	Scott Thorsteinson
Lois Markovich	Scott Peterson	Kathy M. Slencak	Tim Iorlano & Team Jack
Katie Martin	Grace Petty	Kirsten Smith, M.D.	Gary Trovato
Valerie Fiordilino Maslow	Pfizer	Ryan Snow	Megan Tsern
Kelly Masterson	Pharmacyclics/Janssen	SoCalGas	UCLA Health
Sher Mathew	Melissa & Mark Pietramale	Society Ties	The United Food and Commercial Workers International Union (UFCW)
Matt Smith & Team Why We Fight	Shane Polk	Teresa Spittle	Madison Ugaz
Nicole Matthews	Praying for THE Ryan Melendez	Kirin Sran	Clare Vanderbeek
Tim McBride	PVH	Shaylor Steele	Clare Vanderbeek and Jack Morkan
Meghan McCann	PwC	Donald Steiner	Craig Vanderwall, II
Chris & Gary McGraw	Ed Quinn	Lillyana Stephanakis	Ronnette Vondrak
Amanda McHenry	Gayle Coleman Rader	Stater Bros. Charities	VyStar
Mark McIntosh	Ronnie Ram	Stratford School - Fremont Campus	Walgreens
Julie McKenzie	Rampart High School	Julia Strittmatter	Megan Walsh
Anne McLaughlin and Team Grant Strong	Amber Randolph	Steven Sullivan	Walt Whitman High School
Mark McLaughlin	George Raptis	Andrea Zalom Sutter and Team Live Love	Doug Walter
Matt McNally	Ravid Yosef & Married To The Cure	Sydney Clark, Jomsky & Team	Walter Johnson High School
Ryan Melendez	McNab Reeves	Panther Paws for a Cause	Erica Warlick, MD
Nadine Mentor	Mark Richards	Takeda Oncology	Washington Gas
Michael Milberg & Team 828	Riders of the Storm	Team b.strong	Brian Waterman
Shelley Miller	River Oaks Elementary	Team Believe	Watertown Middle School
Mindy Miller Hill	Charles Robbins	Team Blumenfeld & Waterman	The WaWa Foundation
Beatrice Miranda	Julie Rogers	Team Bright Side	Ashley Webster
Jessie Miranda	Andy Roisman	Team CUREageous	Jeff Weiner
Missy's Mojo	Karen Rolland	Team Deere in Memory of Bryant Ante	Wells Fargo
Rafael Mizrachi	Carissa Rose	Team Driving Miss Carmen	West Pharmaceuticals
Stephanie Mortitz	Sondra Rose	Team Farewell No More	Western Digital
MWOY Leadership Team Circle of Hope	Allison Rosenthal, DO	Team Generac	Western Refining
Shahin Naghavi	Kimberly Rost	Team Haley in Honor of Haley Marston	Jennifer Wilkinson
NARS	Roswell High School	Team It ALL Matters	William Mason High School
NewYork-Presbyterian & Weill Cornell Medicine	Luke Rutherford	Team Jamie	Alison Whelehan and Team Campbell & Company
Nick Ineck & Team Elevate	Salesforce	Team Javan	Adam Wilson
Colin Nielson	Sandra Vander Wal and Team CURE	Team Michael	Dwayne Wilson
NOVA Home Loans	Carmen Sans Graciaa	Team OneinaPREMILlion	Nancy Wright Whatley
NuSkin	Sarah Cannon/HealthONE	Team Ride Brook	Nate Wucherpfenning
Lynne O'Brien	Stacy Schneeweis	Team Rise For a Cure	Ahmed Zakari, MD
Arden O'Connor	Frances Schultz	Team RonStrong	Daniel Zausner
Richard Ojeda	Michael Schultz	Team SDG&E/Sempra	F. Brooks Zeigler
Ryan Orton	Helena Scott	Team ShellBell	Zephyr
P.J. O'Toole	Seattle Genetics	Team SHINE	Orli Zimmerman
	Hanna Sellinger		
	Sheila Shah		
	Kevin Shannahan		

Legacy Circle

Legacy Circle honors those who designate LLS as a beneficiary of their will, trust, retirement account or insurance policy, or fund a charitable gift annuity. We list our newest members below along with those whose bequests of \$10,000 or more were received this year.

Catherine Hunt Alspach

Henry Acad*

Joan Applebome (in memory of Jeffrey Paul Baker)

Stephanie Arcel*

Edward Mitchell Badgett*

Ralph Barone*

Patricia Bender (in memory of Joseph A. Dubuc)

Joyce Benson*

Roberta Berrey*

Patrick Bianchi*

Mary L. Blair

Tom Boylan

Keith Brantley*

Frank and Sue Brooks*

Mary Alice Brown*

Julia Cecil (in memory of Joyce Ann Brewer)

Lawrence Cohen

Mary Jane Cumiford*

Millard C. Davis*

Kathryn Dierks*

Peggy and Margaret Dupaquier*

James and Lynn Fager*

Thomas Faria*

Robert Fitchen*

Robert Foster*

Anita Foster*

Grace Fram*

Blanche Goldstein*

Daniel Granahan*

Eleanor Gray*

Lawrence Green*

F.E. Hardy*

Dave and Shirley Hill (in memory of Shirley Hill, RN)

William F. Hoffman*

Stewart S. Johnson*

Christopher Kearns

Mary Keegan (in memory of Nancy J. Montgomery)

Howard and Betty Klausner

Doris Koch*

Edward Kramer (in memory of Connie Kramer)

Eduardo Maciel*

Jonathan and Henrietta Mandel*

Gregory Mahanna*

Ruth Marcus*

Gloria Massari*

Tina Matt*

Odell McCollum*

Carolyn McGolerick* (in memory of Rev. James P. Daniel)

Evelyn Wenzel Modrzewski*

George and Rosemary Mojica (in memory of Oscar Rodriguez)

Kyle Mostransky

Marilyn Pancoast (in memory of Chris Pancoast)

Rita Parodi*

Kathleen Patrissi*

Michael and Gina Pavelec

Stacia Peponis*

Joan Persing (in memory of Harry Wujek, Jr. and in honor of John P. Persing)

Helen Rainoff

Charles Reed*

Dolores Rowland*

Stephen Sears

Bruno and Irma Selmi*

John J. Servinskas

Tom and Barb Stayton

Bruce Swartz*

Olga Tedeschi*

Thomas Thompson*

Audrey Thornton*

Robert Trusler*

Ernest Vander Molen*

Philip Warner*

Eunice Weed*

Abie Werth*

Marna Wickesberg*

Richard Windgassen*

Catherine Woodfield*

Hal and Shirley Wright*

Anonymous (4)

* Deceased

Research Portfolios

LLS Research Portfolios are groups of research projects organized around a specific blood cancer interest. The list below includes donors that generously invested in a specific LLS research portfolio during this fiscal year.

Acute Lymphoblastic Leukemia Research Portfolio is funded in part by Lisa Norcia and Barry Cheskin.

Chronic Lymphocytic Leukemia Research Portfolio is funded in part by the American Construction Company, the George L. Shields Foundation, Inc., John Marten, Randy and Deborah Daniel

Charitable Family Foundation and Arlene Schafer.

Chronic Myelogenous Leukemia Research Portfolio is funded in part by Abbeville Family Partnership, Charles Godchaux - Charles Foundation, Becky Godchaux, Thomas McCarthy, and Leslie and Larry Nance.

Hodgkin Lymphoma Research Portfolio is funded in part by AM Charity Fund.

Myeloma and Waldenstrom Macroglobulinemia Research Portfolio is funded in part by the Carlson Family Foundation Inc.,

Niles Hushka, the Names Family Foundation and Sara Warren.

Aggressive Non-Hodgkin Lymphoma Research Portfolio is funded in part by Donna Hartman, Lisa Norcia and Barry Cheskin.

Indolent Non-Hodgkin Lymphoma Research Portfolio is funded in part by the Dyer Family Foundation, Cristine and Timothy Lindenfelser, and Michael Smith.

Pediatric and Young Adult Blood Cancer Research Portfolio is funded in part by American Construction Company, EFESTÉ Franklin American Mortgage

Company, Megan's Wing Foundation, The Rhoda and David Chase Family Foundation, Inc., Team Bright Side, the Thomas and Agnes Carvel Foundation, and the Wawa Foundation.

Lymphoma Diagnostics Program is funded in part by Chiyoko Furukawa.

Mission Portfolio is funded in part by Ping Y. Tai Foundation, Inc.

Patient Services Program is funded in part by CareFirst BlueCross BlueShield and the Gerald and Paula McNichols Family Foundation.

LIUNA Charitable Foundation Specialized Center of Research is funded in part by The Jim Jacobs Charitable Foundation, the LIUNA Charitable Foundation, Angela and Gary Trovato, and Cathy and Scott Zeilinger.

Therapy Acceleration Program is funded in part by the Carter Family in loving memory of Jason, The Phase Foundation, and The Sence Foundation.

The Susan Lang Pay-It-Forward Transportation Assistance Program is funded in part by the Abby Fund, Angel Wings Foundation, the Butler Family Foundation, Capitol Federal Foundation, the Dallas Foundation, the Enrichment Foundation, Forest County Potawatomi Foundation, the

Lang/Stiglitz Family Fund, the Mader Foundation, The Orear Charitable Foundation, Pharmacyclics, Stater Brothers, Subaru Pediatric Cancer Foundation, and The W. O'Neil Foundation, Inc.

The Harry T. Mangurian, Jr. Beat AML Project is funded in part by James Allen, The Altschul Foundation, Timothy Babich, The Boldt Family Philanthropy Fund, S. Lori Brown, Michael Capone, the Carlton Family Foundation, The Charles T. Bauer Charitable Foundation, Comier, Liz and Michael Copley, Dhaval Dhru, Ed & H. Pillsbury Foundation, F.M. Kirby Foundation, Inc., Kristin and John Hyland, The Jake Wetchler Foundation, For Julie Foundation, Inc., Robert E. Gallagher Charitable Trust, Cynthia and Frank Gasztonyi,

the Hildegard D. Becher Foundation, Inc., HM Insurance Group, J.T. Tai & Co. Foundation, Inc., Diana and Murray Johnson, the Kathryn Dent and John L. Tillman Charitable Fund, Kayleen Larson Legacy Foundation, Mary Beth and Christopher Kearns, John B. Kellenyi, Emily and Neil Kishter, Lisa and Steven Kristel, The Kroll Family Foundation, Paul Leinwand, Lieblich Family Gift Fund, The Lyon Family Foundation, Clyde S. McGregor and LeAnn Pedersen Pope, The Norcross Foundation, Inc. In Memory of Herrick F. Norcross, Jr. (Rick), Donald Porteous, Rahr Corporation, The Rogers Family Foundation, The ROMA Foundation, Pat and Jeff Sachs, Barb & Tom Stayton, Donald Steiner, The Stephen Birnbaum Foundation, Pam and Patrick Sullivan, Peace Sullivan,

Team b.strong, Tom and Virginia Jennaro Family Foundation, Inc., Beth and Natan Vaisman, the Wawa Foundation, West Endowment, Brenda and James Wishbow, and Caroline Young.

Endowment Funds

The Bill Beattie Memorial Endowment Fund (Alberta)
Mary & Robert Bronstein Memorial Fund
The Virginia Major Brooks Memorial Endowment Fund
de Villiers Endowment Fund
Thomas M. Ford Memorial Fund
GlaxoSmithKline Foundation - Gertrude B. Elion Endowment Fund
GlaxoSmithKline, Inc. Research Fund
Jim Jacobs Leukemia Research Fund

The Rachel Kudish Fund
Jane Elissa/Charlotte Meyers Endowment Fund
The Rae Endowment Fund (Ontario)
Vrushali Ranadive Fellowship Fund
Reich Endowment Fund
The United Food and Commercial Workers (Canada) Endowment Fund

Leadership

National Board

Volunteers serve on our National Board of Directors providing leadership and governance to help find blood cancer cures.

Chairman of the Board

Peter Brock

Brock Development
Palm Beach Gardens, FL

Vice Chair

Jorge Benitez

Fort Lauderdale, FL

Secretary/Treasurer

Ralph E. Lawson, FHFMA, CPA

Baptist Health South Florida
Coral Gables, FL

At Large

Raanan Horowitz

Elbit Systems of America, LLC
Fort Worth, TX

Board of Directors

James Beck

Hefren-Tillotson, Inc.
Butler, PA

William G. Behnke

The Behnke Group
San Antonio, TX

A. Dana Callow, Jr.

Boston Millennia Partners
Boston, MA

Renzo Canetta, MD

Madison, CT

Scott A. Carroll, JD

Jackson Lewis
Cincinnati, OH

Elizabeth J. (Betsy) Clark, PhD.

Saugerties, NY

William S. Dalton, MD, PhD

M2Gen
Tampa, FL

Bernard H. Garil

Delray Beach, FL

Francie Heller

Heller Advisory
New York, NY

Richard M. Jeanneret

Ernst & Young LLP
New York, NY

Joseph B. Kelley

Lilly USA, LLC
Washington, DC

Michelle LeBeau, PhD

University of Chicago
Comprehensive Cancer Center
Chicago, IL

Connie L. Lindsey

Northern Trust
Chicago, IL

Kathleen Meriwether

Ernst & Young, LLP
Philadelphia, PA

Ted Moroz

The Beer Store
Ontario, Canada

Donald Proctor

Walnut Creek, CA

Steven T. Rosen, MD, FACP

City of Hope
Duarte, CA

Kenneth Schwartz

Ernst & Young, LLP
New York, NY

Bart Sichel

Burlington Stores
Florence Township, NJ

Frank O. Smith, III, MD

Medpace
Cincinnati, OH

Kathryn C. Vecellio

The Vecellio Group
Palm Beach, FL

Louise G. Warner

Chagrin Falls, OH

Keith S. White

ParkerWhite Brand Interactive
Cardiff by the Sea, CA

Executive Leadership

The Leukemia & Lymphoma Society

Louis J. DeGennaro, PhD

President & Chief Executive Officer

Andrew S. Coccari

Executive Vice President
Chief Product Officer

Danielle Gee

Chief of Staff

Kathy Griesenbeck

Interim Executive Vice President
Chief Relationship Officer

Marcie Klein

Executive Vice President
Chief Communications Officer

Rosemarie Loffredo

Executive Vice President
Chief Financial Officer

Gwen Nichols, MD

Executive Vice President
Chief Medical Officer

Tom Osgood

Executive Vice President
Chief Human Resources Officer

Alice Rodd O'Rourke

Executive Vice President
Chief Development Officer

The Leukemia & Lymphoma Society of Canada

Shelagh Tippet-Fagyas

President
Canadian Operations

Offices

United States:

[https://www.lls.org/
chapter-selection-page](https://www.lls.org/chapter-selection-page)

Canada:

[http://www.llscanada.org/
chapter-selection-page](http://www.llscanada.org/chapter-selection-page)

OUR MISSION

Cure leukemia, lymphoma, Hodgkin's disease and myeloma, and improve the quality of life of patients and their families.

